

ARG63938 anti-CKB / Brain Creatine Kinase antibody

Package: 100 µg
Store at: -20°C

Summary

Product Description	Goat Polyclonal antibody recognizes CKB / Brain Creatine Kinase
Tested Reactivity	Hu
Predict Reactivity	Ms, Rat, Cow, Dog, Pig
Tested Application	WB
Host	Goat
Clonality	Polyclonal
Isotype	IgG
Target Name	CKB / Brain Creatine Kinase
Species	Human
Immunogen	C-KPSDEHKTDLNPDN
Conjugation	Un-conjugated
Alternate Names	Creatine kinase B-type; EC 2.7.3.2; BCK; B-CK; CKBB; Creatine kinase B chain; HEL-S-29; HEL-211

Application Instructions

Application table	Application	Dilution
	WB	0.1 - 0.3 µg/ml
Application Note	WB: Recommend incubate at RT for 1h. * The dilutions indicate recommended starting dilutions and the optimal dilutions or concentrations should be determined by the scientist.	

Properties

Form	Liquid
Purification	Purified from goat serum by antigen affinity chromatography.
Buffer	Tris saline (pH 7.3), 0.02% Sodium azide and 0.5% BSA.
Preservative	0.02% Sodium azide
Stabilizer	0.5% BSA
Concentration	0.5 mg/ml
Storage instruction	For continuous use, store undiluted antibody at 2-8°C for up to a week. For long-term storage, aliquot and store at -20°C or below. Storage in frost free freezers is not recommended. Avoid repeated freeze/thaw cycles. Suggest spin the vial prior to opening. The antibody solution should be gently mixed before use.
Note	For laboratory research only, not for drug, diagnostic or other use.

Bioinformation

Database links

[GeneID: 1152 Human](#)

[Swiss-port # P12277 Human](#)

Background

The protein encoded by this gene is a cytoplasmic enzyme involved in energy homeostasis. The encoded protein reversibly catalyzes the transfer of phosphate between ATP and various phosphogens such as creatine phosphate. It acts as a homodimer in brain as well as in other tissues, and as a heterodimer with a similar muscle isozyme in heart. The encoded protein is a member of the ATP:guanido phosphotransferase protein family. A pseudogene of this gene has been characterized. [provided by RefSeq, Jul 2008]

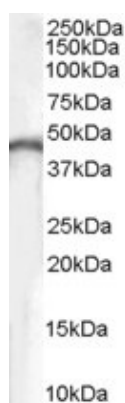
Research Area

Cancer antibody; Metabolism antibody; Neuroscience antibody; Signaling Transduction antibody

Calculated Mw

43 kDa

Images



ARG63938 anti-CKB / Brain Creatine Kinase antibody WB image

Western Blot: human brain lysate (35 µg protein in RIPA buffer) stained with ARG63938 anti-CKB / Brain Creatine Kinase antibody at 0.1 µg/ml dilution.