

## ARG63922 anti-EP4 prostaglandin Receptor antibody

Package: 100 µg  
Store at: -20°C

### Summary

Product Description	Goat Polyclonal antibody recognizes EP4 prostaglandin Receptor
Tested Reactivity	Hu
Predict Reactivity	Dog
Tested Application	WB
Host	Goat
Clonality	Polyclonal
Isotype	IgG
Target Name	EP4 prostaglandin Receptor
Species	Human
Immunogen	C-LEREVSKNPDLQA
Conjugation	Un-conjugated
Alternate Names	PGE2 receptor EP4 subtype; Prostanoid EP4 receptor; Prostaglandin E2 receptor EP4 subtype; EP4; EP4R; PGE receptor EP4 subtype

### Application Instructions

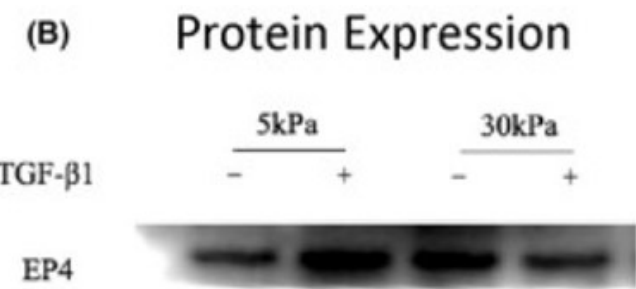
Application table	Application	Dilution
	WB	0.1 - 0.3 µg/ml
Application Note	WB: Recommend incubate at RT for 1h. * The dilutions indicate recommended starting dilutions and the optimal dilutions or concentrations should be determined by the scientist.	

### Properties

Form	Liquid
Purification	Purified from goat serum by antigen affinity chromatography.
Buffer	Tris saline (pH 7.3), 0.02% Sodium azide and 0.5% BSA.
Preservative	0.02% Sodium azide
Stabilizer	0.5% BSA
Concentration	0.5 mg/ml
Storage instruction	For continuous use, store undiluted antibody at 2-8°C for up to a week. For long-term storage, aliquot and store at -20°C or below. Storage in frost free freezers is not recommended. Avoid repeated freeze/thaw cycles. Suggest spin the vial prior to opening. The antibody solution should be gently mixed before use.
Note	For laboratory research only, not for drug, diagnostic or other use.

Database links	<a href="#">GeneID: 5734 Human</a> <a href="#">Swiss-port # P35408 Human</a>
Background	The protein encoded by this gene is a member of the G-protein coupled receptor family. This protein is one of four receptors identified for prostaglandin E2 (PGE2). This receptor can activate T-cell factor signaling. It has been shown to mediate PGE2 induced expression of early growth response 1 (EGR1), regulate the level and stability of cyclooxygenase-2 mRNA, and lead to the phosphorylation of glycogen synthase kinase-3. Knockout studies in mice suggest that this receptor may be involved in the neonatal adaptation of circulatory system, osteoporosis, as well as initiation of skin immune responses. [provided by RefSeq, Jul 2008]
Research Area	Signaling Transduction antibody
Calculated Mw	53 kDa
PTM	Phosphorylation mediates agonist-mediated desensitization by promoting cytoplasmic retention.

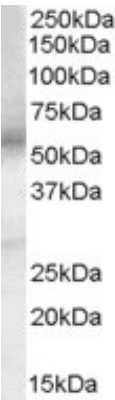
Images



ARG63922 anti-EP4 prostaglandin Receptor antibody WB image

Western blot: Endometrial Stromal cells stained with ARG63922 anti-EP4 prostaglandin Receptor antibody at 1:1000 dilution and [ARG65352 Donkey anti-Goat IgG antibody \(HRP\)](#).

From Qingqing Huang et al. Reprod Med Biol. (2021), [doi: 10.1002/rmb2.12423](#), Fig. 3.C.



ARG63922 anti-EP4 prostaglandin Receptor antibody WB image

Western blot: Human Testes lysate (35 µg protein in RIPA buffer) stained with ARG63922 anti-EP4 prostaglandin Receptor antibody at 0.1 µg/ml dilution.