

## ARG63916 anti-EIF2C1 / AGO1 antibody

Package: 100 µg  
Store at: -20°C

### Summary

Product Description	Goat Polyclonal antibody recognizes EIF2C1 / AGO1
Tested Reactivity	Hu
Predict Reactivity	Ms, Rat, Dog
Tested Application	IHC-P, WB
Specificity	This product is not expected to cross-react with EIF2C2, EIF2C3 and EIF2C4.
Host	Goat
Clonality	Polyclonal
Isotype	IgG
Target Name	EIF2C1 / AGO1
Species	Human
Immunogen	C-KNASYNLDPIYQEF
Conjugation	Un-conjugated
Alternate Names	GERP95; Q99; eIF2C 1; EIF2C; EIF2C1; Argonaute RISC catalytic component 1; Argonaute1; Protein argonaute-1; hAgo1; Putative RNA-binding protein Q99; eIF-2C 1; Eukaryotic translation initiation factor 2C 1

### Application Instructions

Application table	Application	Dilution
	IHC-P	2.5 µg/ml
	WB	0.3 - 1 µg/ml
Application Note	WB: Recommend incubate at RT for 1h. IHC-P: Antigen Retrieval: Steam tissue section in Citrate buffer (pH 6.0). * The dilutions indicate recommended starting dilutions and the optimal dilutions or concentrations should be determined by the scientist.	

### Properties

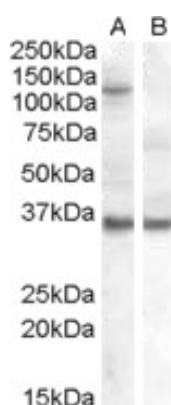
Form	Liquid
Purification	Purified from goat serum by antigen affinity chromatography.
Buffer	Tris saline (pH 7.3), 0.02% Sodium azide and 0.5% BSA.
Preservative	0.02% Sodium azide
Stabilizer	0.5% BSA
Concentration	0.5 mg/ml

Storage instruction	For continuous use, store undiluted antibody at 2-8°C for up to a week. For long-term storage, aliquot and store at -20°C or below. Storage in frost free freezers is not recommended. Avoid repeated freeze/thaw cycles. Suggest spin the vial prior to opening. The antibody solution should be gently mixed before use.
Note	For laboratory research only, not for drug, diagnostic or other use.

## Bioinformation

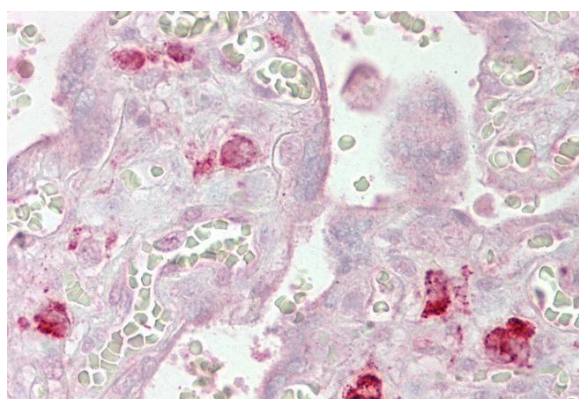
Database links	<a href="#">GeneID: 26523 Human</a> <a href="#">Swiss-port # Q9UL18 Human</a>
Background	This gene encodes a member of the Argonaute family of proteins which play a role in RNA interference. The encoded protein is highly basic, and contains a PAZ domain and a PIWI domain. It may interact with dicer1 and play a role in short-interfering-RNA-mediated gene silencing. This gene is located on chromosome 1 in a cluster of closely related family members including argonaute 3, and argonaute 4. [provided by RefSeq, Jul 2008]
Research Area	Cell Biology and Cellular Response antibody; Gene Regulation antibody
Calculated Mw	97 kDa

## Images



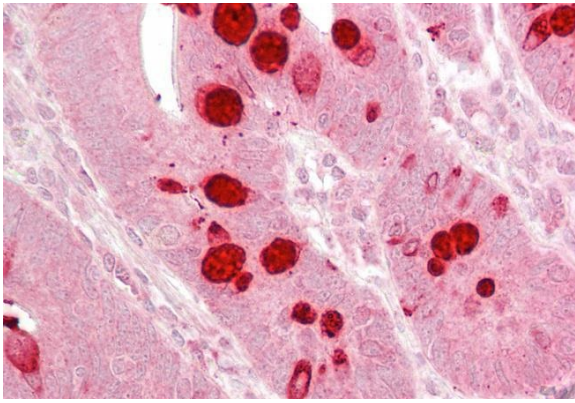
ARG63916 anti-EIF2C1 / AGO1 antibody WB image

Western Blot: 1). EIF2C1 expressing plasmid transfected; 2) Mock transfection HEK293 cell lysate stained with ARG63916 anti-EIF2C1 / AGO1 antibody



ARG63916 anti-EIF2C1 / AGO1 antibody IHC-P image

Immunohistochemistry: Paraffin-embedded Human placenta tissue. Antigen Retrieval: Steam tissue section in Citrate buffer (pH 6.0). The tissue section was stained with ARG63916 anti-EIF2C1 / AGO1 antibody at 2.5 µg/ml dilution followed by AP-staining.



ARG63916 anti-EIF2C1 / AGO1 antibody IHC-P image

Immunohistochemistry: Paraffin-embedded Human small intestine tissue. Antigen Retrieval: Steam tissue section in Citrate buffer (pH 6.0). The tissue section was stained with ARG63916 anti-EIF2C1 / AGO1 antibody at 2.5 µg/ml dilution followed by AP-staining.