

ARG63909 anti-CD14 antibody

Package: 100 µg
Store at: -20°C

Summary

Product Description	Goat Polyclonal antibody recognizes CD14
Tested Reactivity	Hu
Tested Application	WB
Host	Goat
Clonality	Polyclonal
Isotype	IgG
Target Name	CD14
Species	Human
Immunogen	C-KRVDADADPRQYAD
Conjugation	Un-conjugated
Alternate Names	CD antigen CD14; Myeloid cell-specific leucine-rich glycoprotein; Monocyte differentiation antigen CD14

Application Instructions

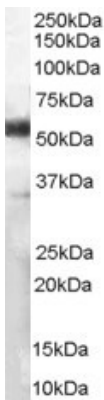
Application table	Application	Dilution
	WB	1 - 3 µg/ml
Application Note	WB: Recommend incubate at RT for 1h. * The dilutions indicate recommended starting dilutions and the optimal dilutions or concentrations should be determined by the scientist.	

Properties

Form	Liquid
Purification	Purified from goat serum by antigen affinity chromatography.
Buffer	Tris saline (pH 7.3), 0.02% Sodium azide and 0.5% BSA.
Preservative	0.02% Sodium azide
Stabilizer	0.5% BSA
Concentration	0.5 mg/ml
Storage instruction	For continuous use, store undiluted antibody at 2-8°C for up to a week. For long-term storage, aliquot and store at -20°C or below. Storage in frost free freezers is not recommended. Avoid repeated freeze/thaw cycles. Suggest spin the vial prior to opening. The antibody solution should be gently mixed before use.
Note	For laboratory research only, not for drug, diagnostic or other use.

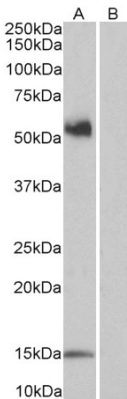
Database links	GeneID: 929 Human Swiss-port # P08571 Human
Background	The protein encoded by this gene is a surface antigen that is preferentially expressed on monocytes/macrophages. It cooperates with other proteins to mediate the innate immune response to bacterial lipopolysaccharide. Alternative splicing results in multiple transcript variants encoding the same protein. [provided by RefSeq, Mar 2010]
Research Area	Developmental Biology antibody; Immune System antibody; General Lymphocyte Marker Study antibody; Macrophages and neutrophils antibody
Calculated Mw	40 kDa
PTM	N- and O- glycosylated. O-glycosylated with a core 1 or possibly core 8 glycan.

Images



ARG63909 anti-CD14 antibody WB image

Western Blot: Human Lymph Node lysate (35 µg protein in RIPA buffer) stained with ARG63909 anti-CD14 antibody at 1 µg/ml dilution.



ARG63909 anti-CD14 antibody WB image

Western blot: 35 µg of peripheral blood mononucleocyte lysates (in RIPA buffer) with (B) and without (A) blocking peptide. The blots were stained with ARG63909 anti-CD14 antibody at 1 µg/ml dilution and incubated at RT for 1 hour.