

ARG63854 anti-GOLGA3 antibody

Package: 100 µg
Store at: -20°C

Summary

Product Description	Goat Polyclonal antibody recognizes GOLGA3
Tested Reactivity	Hu
Tested Application	WB
Host	Goat
Clonality	Polyclonal
Isotype	IgG
Target Name	GOLGA3
Species	Human
Immunogen	C-HSQSRASKEGPGE
Conjugation	Un-conjugated
Alternate Names	GCP170; Golgi complex-associated protein of 170 kDa; Golgin subfamily A member 3; Golgin-160; MEA-2

Application Instructions

Application table	Application	Dilution
	WB	0.1 - 0.3 µg/ml
Application Note	WB: Recommend incubate at RT for 1h. * The dilutions indicate recommended starting dilutions and the optimal dilutions or concentrations should be determined by the scientist.	

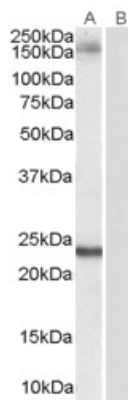
Properties

Form	Liquid
Purification	Purified from goat serum by antigen affinity chromatography.
Buffer	Tris saline (pH 7.3), 0.02% Sodium azide and 0.5% BSA.
Preservative	0.02% Sodium azide
Stabilizer	0.5% BSA
Concentration	0.5 mg/ml
Storage instruction	For continuous use, store undiluted antibody at 2-8°C for up to a week. For long-term storage, aliquot and store at -20°C or below. Storage in frost free freezers is not recommended. Avoid repeated freeze/thaw cycles. Suggest spin the vial prior to opening. The antibody solution should be gently mixed before use.
Note	For laboratory research only, not for drug, diagnostic or other use.

Bioinformation

Database links	GeneID: 2802 Human Swiss-port # Q08378 Human
Background	The Golgi apparatus, which participates in glycosylation and transport of proteins and lipids in the secretory pathway, consists of a series of stacked cisternae (flattened membrane sacs). Interactions between the Golgi and microtubules are thought to be important for the reorganization of the Golgi after it fragments during mitosis. This gene encodes a member of the golgin family of proteins which are localized to the Golgi. Its encoded protein has been postulated to play a role in nuclear transport and Golgi apparatus localization. Several alternatively spliced transcript variants that encode different protein isoforms have been described for this gene. [provided by RefSeq, Feb 2010]
Research Area	Signaling Transduction antibody
Calculated Mw	167 kDa
PTM	Cleaved by caspases in apoptotic cells.

Images



ARG63854 anti-GOLGA3 antibody WB image

Western Blot: HeLa lysate (35 µg protein in RIPA buffer) stained with ARG63854 anti-GOLGA3 antibody at 0.1 µg/ml dilution.