

ARG63827 anti-SDHB antibody

Package: 100 µg
Store at: -20°C

Summary

Product Description	Goat Polyclonal antibody recognizes SDHB
Tested Reactivity	Hu
Tested Application	IHC-P, WB
Host	Goat
Clonality	Polyclonal
Isotype	IgG
Target Name	SDHB
Species	Human
Immunogen	C-ATYKEKKASV
Conjugation	Un-conjugated
Alternate Names	Ip; SDH2; SDH1; IP; EC 1.3.5.1; PGL4; CWS2; Succinate dehydrogenase [ubiquinone] iron-sulfur subunit, mitochondrial; SDHIP; Iron-sulfur subunit of complex II; SDH

Application Instructions

Application table	Application	Dilution
	IHC-P	5 µg/ml
	WB	0.03 - 0.1 µg/ml
Application Note	WB: Recommend incubate at RT for 1h. IHC-P: Antigen Retrieval: Steam tissue section in Citrate buffer (pH 6.0). * The dilutions indicate recommended starting dilutions and the optimal dilutions or concentrations should be determined by the scientist.	

Properties

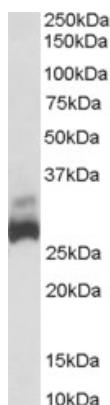
Form	Liquid
Purification	Purified from goat serum by antigen affinity chromatography.
Buffer	Tris saline (pH 7.3), 0.02% Sodium azide and 0.5% BSA.
Preservative	0.02% Sodium azide
Stabilizer	0.5% BSA
Concentration	0.5 mg/ml
Storage instruction	For continuous use, store undiluted antibody at 2-8°C for up to a week. For long-term storage, aliquot and store at -20°C or below. Storage in frost free freezers is not recommended. Avoid repeated freeze/thaw cycles. Suggest spin the vial prior to opening. The antibody solution should be gently mixed before use.

Note For laboratory research only, not for drug, diagnostic or other use.

Bioinformation

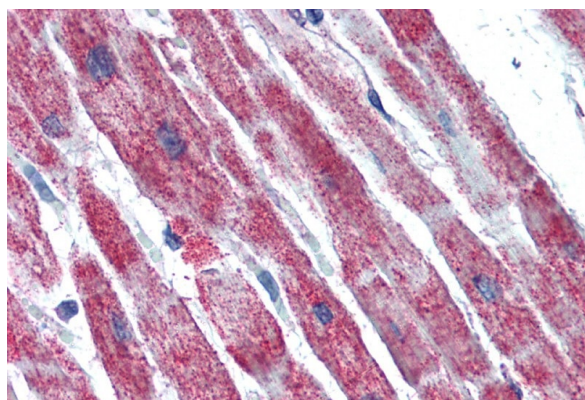
Database links	GeneID: 6390 Human Swiss-port # P21912 Human
Background	Complex II of the respiratory chain, which is specifically involved in the oxidation of succinate, carries electrons from FADH to CoQ. The complex is composed of four nuclear-encoded subunits and is localized in the mitochondrial inner membrane. The iron-sulfur subunit is highly conserved and contains three cysteine-rich clusters which may comprise the iron-sulfur centers of the enzyme. Sporadic and familial mutations in this gene result in paragangliomas and pheochromocytoma, and support a link between mitochondrial dysfunction and tumorigenesis. [provided by RefSeq, Jul 2008]
Research Area	Cancer antibody; Cell Biology and Cellular Response antibody; Metabolism antibody; Signaling Transduction antibody
Calculated Mw	32 kDa

Images



ARG63827 anti-SDHB antibody WB image

Western Blot: Human Liver lysate (35 µg protein in RIPA buffer) stained with ARG63827 anti-SDHB antibody at 0.03 µg/ml dilution.



ARG63827 anti-SDHB antibody IHC-P image

Immunohistochemistry: Paraffin-embedded Human heart tissue. Antigen Retrieval: Steam tissue section in Citrate buffer (pH 6.0). The tissue section was stained with ARG63827 anti-SDHB antibody at 5 µg/ml dilution followed by AP-staining.