

ARG63791 anti-MEPI / SERPINI2 antibody

Package: 100 µg
Store at: -20°C

Summary

Product Description	Goat Polyclonal antibody recognizes MEPI / SERPINI2
Tested Reactivity	Hu
Predict Reactivity	Ms, Rat, Dog
Tested Application	IHC-P, WB
Specificity	This antibody is expected to recognise both reported isoforms (NP_006208.1; NP_001012303.1).
Host	Goat
Clonality	Polyclonal
Isotype	IgG
Target Name	MEPI / SERPINI2
Species	Human
Immunogen	C-KGDWKQKFRKEDTQ
Conjugation	Un-conjugated
Alternate Names	TSA2004; Myoepithelium-derived serine protease inhibitor; Peptidase inhibitor 14; Serpin I2; PANCPIN; MEPI; Pancpin; PI-14; Pancreas-specific protein TSA2004; PI14

Application Instructions

Application table	Application	Dilution
	IHC-P	3 µg/ml
	WB	0.3 - 1 µg/ml
Application Note	IHC-P: Antigen Retrieval: Microwaved tissue section in Citrate buffer (pH 6.0). WB: Recommend incubate at RT for 1h. * The dilutions indicate recommended starting dilutions and the optimal dilutions or concentrations should be determined by the scientist.	

Properties

Form	Liquid
Purification	Purified from goat serum by antigen affinity chromatography.
Buffer	Tris saline (pH 7.3), 0.02% Sodium azide and 0.5% BSA.
Preservative	0.02% Sodium azide
Stabilizer	0.5% BSA
Concentration	0.5 mg/ml
Storage instruction	For continuous use, store undiluted antibody at 2-8°C for up to a week. For long-term storage, aliquot and store at -20°C or below. Storage in frost free freezers is not recommended. Avoid repeated

freeze/thaw cycles. Suggest spin the vial prior to opening. The antibody solution should be gently mixed before use.

Note For laboratory research only, not for drug, diagnostic or other use.

Bioinformation

Database links [GeneID: 5276 Human](#)

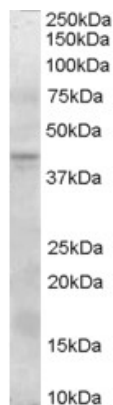
[Swiss-port # O75830 Human](#)

Background The protein encoded by this gene is a member of the serine protease inhibitor (serpin) superfamily made up of proteins which play central roles in the regulation of a wide variety of physiological processes, including coagulation, fibrinolysis, development, malignancy and inflammation. The gene product may have a role in a growth-control, possibly growth-suppressing pathway and, when impaired, may be involved in pancreatic carcinogenesis. The protein is a member of the plasminogen activator inhibitor-1 family, a subset of the serpin superfamily whose members act as tissue-specific tPA inhibitors. Two alternatively spliced transcript variants encoding distinct protein isoforms have been found for this gene. [provided by RefSeq, Jul 2008]

Research Area Cell Biology and Cellular Response antibody

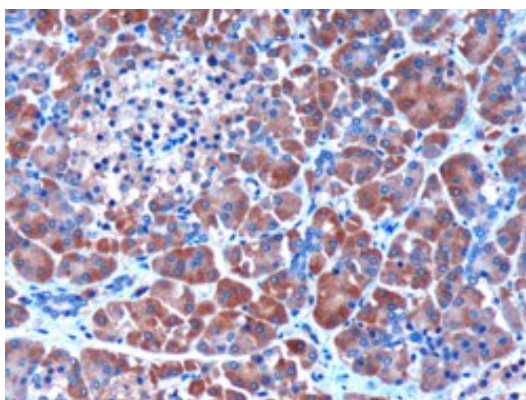
Calculated Mw 46 kDa

Images



ARG63791 anti-MEPI / SERPINI2 antibody WB image

Western Blot: Human Pancreas lysate (35 µg protein in RIPA buffer) stained with ARG63791 anti-MEPI / SERPINI2 antibody at 0.3 µg/ml dilution.



ARG63791 anti-MEPI / SERPINI2 antibody IHC-P image

Immunohistochemistry: paraffin embedded Human Pancreas. (Microwaved antigen retrieval with citrate buffer pH 6) stained with ARG63791 anti-MEPI / SERPINI2 antibody at 3 µg/ml dilution followed by HRP-staining