

ARG63789 anti-MIF antibody

Package: 100 µg
Store at: -20°C

Summary

Product Description	Goat Polyclonal antibody recognizes MIF
Tested Reactivity	Hu
Predict Reactivity	Ms, Rat
Tested Application	IHC-P, WB
Host	Goat
Clonality	Polyclonal
Isotype	IgG
Target Name	MIF
Species	Human
Immunogen	C-NAANVGWNNSTFA
Conjugation	Un-conjugated
Alternate Names	Phenylpyruvate tautomerase; L-dopachrome tautomerase; GLIF; L-dopachrome isomerase; MMIF; Macrophage migration inhibitory factor; MIF; GIF; EC 5.3.2.1; Glycosylation-inhibiting factor; EC 5.3.3.12

Application Instructions

Application table	Application	Dilution
	IHC-P	5 µg/ml
	WB	0.01 - 0.03 µg/ml
Application Note	WB: Recommend incubate at RT for 1h. IHC-P: Antigen Retrieval: Steam tissue section in Citrate buffer (pH 6.0). * The dilutions indicate recommended starting dilutions and the optimal dilutions or concentrations should be determined by the scientist.	

Properties

Form	Liquid
Purification	Purified from goat serum by antigen affinity chromatography.
Buffer	Tris saline (pH 7.3), 0.02% Sodium azide and 0.5% BSA.
Preservative	0.02% Sodium azide
Stabilizer	0.5% BSA
Concentration	0.5 mg/ml
Storage instruction	For continuous use, store undiluted antibody at 2-8°C for up to a week. For long-term storage, aliquot and store at -20°C or below. Storage in frost free freezers is not recommended. Avoid repeated

freeze/thaw cycles. Suggest spin the vial prior to opening. The antibody solution should be gently mixed before use.

Note

For laboratory research only, not for drug, diagnostic or other use.

Bioinformation

Database links

[GeneID: 4282 Human](#)

[Swiss-port # P14174 Human](#)

Background

This gene encodes a lymphokine involved in cell-mediated immunity, immunoregulation, and inflammation. It plays a role in the regulation of macrophage function in host defense through the suppression of anti-inflammatory effects of glucocorticoids. This lymphokine and the JAB1 protein form a complex in the cytosol near the peripheral plasma membrane, which may indicate an additional role in integrin signaling pathways. [provided by RefSeq, Jul 2008]

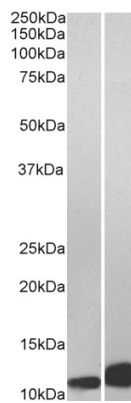
Research Area

Immune System antibody

Calculated Mw

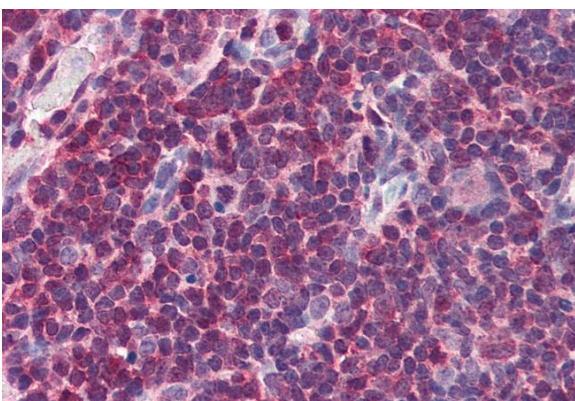
12 kDa

Images



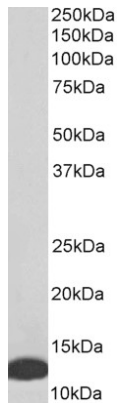
ARG63789 anti-MIF antibody WB image

Western Blot: Daudi (A) and Jurkat (B) lysate (35 µg protein in RIPA buffer) stained with ARG63789 anti-MIF antibody at 0.01 µg/ml dilution.



ARG63789 anti-MIF antibody IHC-P image

Immunohistochemistry: Paraffin-embedded Human thymus tissue. Antigen Retrieval: Steam tissue section in Citrate buffer (pH 6.0). The tissue section was stained with ARG63789 anti-MIF antibody at 5 µg/ml dilution followed by AP-staining.



ARG63789 anti-MIF antibody WB image

Western blot: 35 µg of Human thymus lysate (in RIPA buffer) stained with ARG63789 anti-MIF antibody at 0.01 µg/ml dilution and incubated at RT for 1 hour.