

ARG63777 anti-GPR40 antibody

Package: 100 µg
Store at: -20°C

Summary

Product Description	Goat Polyclonal antibody recognizes GPR40
Tested Reactivity	Hu
Tested Application	WB
Host	Goat
Clonality	Polyclonal
Isotype	IgG
Target Name	GPR40
Species	Human
Immunogen	CAARTQGGKSQK
Conjugation	Un-conjugated
Alternate Names	G-protein coupled receptor 40; GPCR40; Free fatty acid receptor 1; GPR40; FFA1R

Application Instructions

Application table	Application	Dilution
	WB	0.01 - 0.03 µg/ml
Application Note	WB: Recommend incubate at RT for 1h. * The dilutions indicate recommended starting dilutions and the optimal dilutions or concentrations should be determined by the scientist.	

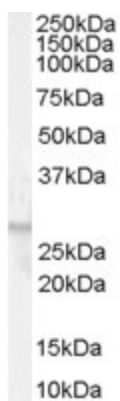
Properties

Form	Liquid
Purification	Purified from goat serum by antigen affinity chromatography.
Buffer	Tris saline (pH 7.3), 0.02% Sodium azide and 0.5% BSA.
Preservative	0.02% Sodium azide
Stabilizer	0.5% BSA
Concentration	0.5 mg/ml
Storage instruction	For continuous use, store undiluted antibody at 2-8°C for up to a week. For long-term storage, aliquot and store at -20°C or below. Storage in frost free freezers is not recommended. Avoid repeated freeze/thaw cycles. Suggest spin the vial prior to opening. The antibody solution should be gently mixed before use.
Note	For laboratory research only, not for drug, diagnostic or other use.

Bioinformation

Database links	GeneID: 2864 Human Swiss-port # O14842 Human
Background	This gene encodes a member of the GP40 family of G protein-coupled receptors that are clustered together on chromosome 19. The encoded protein is a receptor for medium and long chain free fatty acids and may be involved in the metabolic regulation of insulin secretion. Polymorphisms in this gene may be associated with type 2 diabetes. [provided by RefSeq, Apr 2009]
Research Area	Signaling Transduction antibody
Calculated Mw	31 kDa

Images



ARG63777 anti-GPR40 antibody WB image

Western Blot: Human Breast lysate (35 µg protein in RIPA buffer) stained with ARG63777 anti-GPR40 antibody at 0.01 µg/ml dilution.