

## ARG63744 anti-PAI1 / SERPINE1 antibody

Package: 100 µg  
Store at: -20°C

### Summary

Product Description	Goat Polyclonal antibody recognizes PAI1 / SERPINE1
Tested Reactivity	Hu
Predict Reactivity	Dog
Tested Application	ELISA, IHC-P, WB
Specificity	This antibody is expected to recognise both reported isoforms.
Host	Goat
Clonality	Polyclonal
Isotype	IgG
Target Name	PAI1 / SERPINE1
Species	Human
Immunogen	C-GFKIDDKGMALRH
Conjugation	Un-conjugated
Alternate Names	Serpin E1; PLANH1; Endothelial plasminogen activator inhibitor; Plasminogen activator inhibitor 1; PAI; PAI1; PAI-1

### Application Instructions

Application table	Application	Dilution
	ELISA	1.5 - 3 µg/ml (detection Ab)
	IHC-P	4 - 6 µg/ml
	WB	0.1 - 0.3 µg/ml
Application Note	IHC-P: Antigen Retrieval: Steam tissue section in Tris/EDTA buffer (pH 9.0). WB: Recommend incubate at RT for 1h. * The dilutions indicate recommended starting dilutions and the optimal dilutions or concentrations should be determined by the scientist.	

### Properties

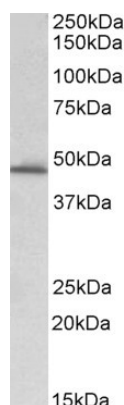
Form	Liquid
Purification	Purified from goat serum by antigen affinity chromatography.
Buffer	Tris saline (pH 7.3), 0.02% Sodium azide and 0.5% BSA.
Preservative	0.02% Sodium azide
Stabilizer	0.5% BSA
Concentration	0.5 mg/ml

Storage instruction	For continuous use, store undiluted antibody at 2-8°C for up to a week. For long-term storage, aliquot and store at -20°C or below. Storage in frost free freezers is not recommended. Avoid repeated freeze/thaw cycles. Suggest spin the vial prior to opening. The antibody solution should be gently mixed before use.
Note	For laboratory research only, not for drug, diagnostic or other use.

## Bioinformation

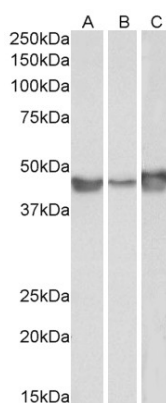
Database links	<a href="#">GeneID: 5054 Human</a> <a href="#">Swiss-port # P05121 Human</a>
Background	<p>This gene encodes a member of the serine proteinase inhibitor (serpin) superfamily. This member is the principal inhibitor of tissue plasminogen activator (tPA) and urokinase (uPA), and hence is an inhibitor of fibrinolysis. Defects in this gene are the cause of plasminogen activator inhibitor-1 deficiency (PAI-1 deficiency), and high concentrations of the gene product are associated with thrombophilia. Alternatively spliced transcript variants encoding different isoforms have been found for this gene. [provided by RefSeq, Sep 2009]</p>
Research Area	Cancer antibody; Cell Biology and Cellular Response antibody; Metabolism antibody
Calculated Mw	45 kDa
PTM	Inactivated by proteolytic attack of the urokinase-type (u-PA) and the tissue-type (TPA), cleaving the 369-Arg- -Met-370 bond.

## Images



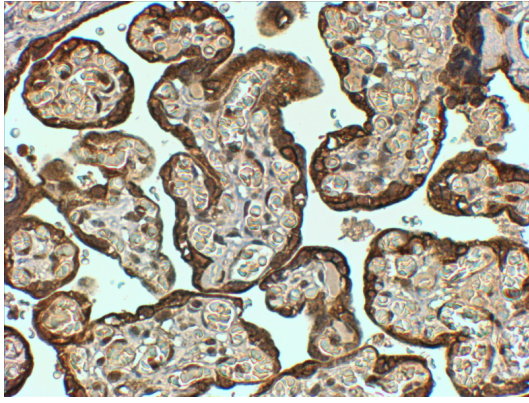
ARG63744 anti-PAI1 / SERPINE1 antibody WB image

Western Blot: Human Liver lysate (35 µg protein in RIPA buffer) stained with ARG63744 anti-PAI1 / SERPINE1 antibody at 0.3 µg/ml dilution.



ARG63744 anti-PAI1 / SERPINE1 antibody WB image

Western Blot: A549 (A), HepG2 (B) and HeLa (C) lysates (35 µg protein in RIPA buffer) stained with ARG63744 anti-PAI1 / SERPINE1 antibody at 0.1 µg/ml dilution.



ARG63744 anti-PAI1 / SERPINE1 antibody IHC-P image

Immunohistochemistry: paraffin embedded Human Placenta.  
(Steamed antigen retrieval with Tris/EDTA buffer pH 9) stained with  
ARG63744 anti-PAI1 / SERPINE1 antibody at 4 µg/ml dilution  
followed by HRP-staining.