

ARG63719 anti-SCAP2 / PRAP antibody

Package: 100 µg
Store at: -20°C

Summary

| | |
|---------------------|--|
| Product Description | Goat Polyclonal antibody recognizes SCAP2 / PRAP |
| Tested Reactivity | Hu |
| Predict Reactivity | Ms, Rat, Cow, Dog |
| Tested Application | WB |
| Host | Goat |
| Clonality | Polyclonal |
| Isotype | IgG |
| Target Name | SCAP2 / PRAP |
| Species | Human |
| Immunogen | C-GLVPKAYIMEMYDI |
| Conjugation | Un-conjugated |
| Alternate Names | SCAP2; PRAP; RA70; Src-associated adapter protein with PH and SH3 domains; Src family-associated phosphoprotein 2; Src kinase-associated phosphoprotein 2; Pyk2/RAFTK-associated protein; SKAP55 homolog; SKAP55R; Retinoic acid-induced protein 70; SKAP-55HOM; SKAP-HOM; Src kinase-associated phosphoprotein 55-related protein; SAPS |

Application Instructions

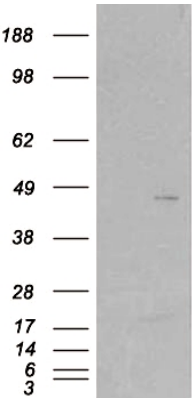
| Application table | Application | Dilution |
|-------------------|--|---------------|
| | WB | 0.5 - 2 µg/ml |
| Application Note | WB: Recommend incubate at RT for 1h. * The dilutions indicate recommended starting dilutions and the optimal dilutions or concentrations should be determined by the scientist. | |

Properties

| | |
|---------------------|--|
| Form | Liquid |
| Purification | Purified from goat serum by antigen affinity chromatography. |
| Buffer | Tris saline (pH 7.3), 0.02% Sodium azide and 0.5% BSA. |
| Preservative | 0.02% Sodium azide |
| Stabilizer | 0.5% BSA |
| Concentration | 0.5 mg/ml |
| Storage instruction | For continuous use, store undiluted antibody at 2-8°C for up to a week. For long-term storage, aliquot and store at -20°C or below. Storage in frost free freezers is not recommended. Avoid repeated freeze/thaw cycles. Suggest spin the vial prior to opening. The antibody solution should be gently mixed before use. |

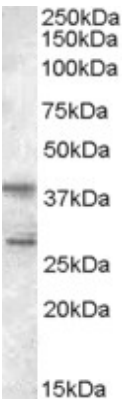
| | |
|-----------------------|---|
| Note | For laboratory research only, not for drug, diagnostic or other use. |
| Bioinformation | |
| Database links | GeneID: 8935 Human Swiss-port # O75563 Human |
| Background | The protein encoded by this gene belongs to the src family kinases. This protein is similar to the src kinase associated phosphoprotein 1. It is an adaptor protein that is thought to play an essential role in the src signaling pathway in various cells. It inhibits PTK2B/RAFTK activity and regulates alpha-synuclein phosphorylation. [provided by RefSeq, Jul 2008] |
| Research Area | Signaling Transduction antibody |
| Calculated Mw | 41 kDa |
| PTM | Phosphorylated in resting platelets. Phosphorylated by FYN on Tyr-261 upon T-cell activation (Probable). Dephosphorylated on Tyr-75 by PTPN22. |

Images



ARG63719 anti-SCAP2 / PRAP antibody WB image

Western Blot: 1). Mock transfection; 2) SKAP2 (RC206119) expressing plasmid transfected HEK293 cell lysate standed with ARG63719 anti-SCAP2 / PRAP antibody



ARG63719 anti-SCAP2 / PRAP antibody WB image

Western Blot: Jurkat lysate (35 µg protein in RIPA buffer) stained with ARG63719 anti-SCAP2 / PRAP antibody at 0.5 µg/ml dilution.