

## ARG63686 anti-CENTA2 antibody

Package: 100 µg  
Store at: -20°C

### Summary

Product Description	Goat Polyclonal antibody recognizes CENTA2
Tested Reactivity	Hu
Tested Application	IHC-P
Host	Goat
Clonality	Polyclonal
Isotype	IgG
Target Name	CENTA2
Species	Human
Immunogen	C-RLTASTESGRSSR
Conjugation	Un-conjugated
Alternate Names	HSA272195; Arf-GAP with dual PH domain-containing protein 2; CENTA2; Cnt-a2; Centaurin-alpha-2; cent-b

### Application Instructions

Application table	Application	Dilution
	IHC-P	5 - 10 µg/ml
Application Note	IHC-P: Antigen Retrieval: Steam tissue section in Citrate buffer (pH 6.0). * The dilutions indicate recommended starting dilutions and the optimal dilutions or concentrations should be determined by the scientist.	

### Properties

Form	Liquid
Purification	Purified from goat serum by antigen affinity chromatography.
Buffer	Tris saline (pH 7.3), 0.02% Sodium azide and 0.5% BSA.
Preservative	0.02% Sodium azide
Stabilizer	0.5% BSA
Concentration	0.5 mg/ml
Storage instruction	For continuous use, store undiluted antibody at 2-8°C for up to a week. For long-term storage, aliquot and store at -20°C or below. Storage in frost free freezers is not recommended. Avoid repeated freeze/thaw cycles. Suggest spin the vial prior to opening. The antibody solution should be gently mixed before use.
Note	For laboratory research only, not for drug, diagnostic or other use.

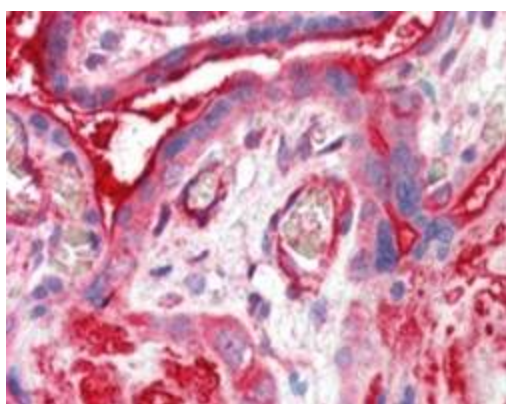
## Bioinformation

---

Database links	<a href="#">GeneID: 55803 Human</a> <a href="#">Swiss-port # Q9NPF8 Human</a>
Gene Symbol	ADAP2
Gene Full Name	ArfGAP with dual PH domains 2
Function	GTPase-activating protein for the ADP ribosylation factor family (Potential). Binds phosphatidylinositol 3,4,5-trisphosphate (PtdInsP3) and inositol 1,3,4,5-tetrakisphosphate (InsP4). Possesses a stoichiometry of two binding sites for InsP4 with identical affinity. [UniProt]
Research Area	Signaling Transduction antibody
Calculated Mw	44 kDa

## Images

---



ARG63686 anti-CENTA2 antibody IHC-P image

Immunohistochemistry: paraffin embedded Human Placenta. (Steamed antigen retrieval with citrate buffer pH 6) stained with ARG63686 anti-CENTA2 antibody at 5 µg/ml dilution followed by AP-staining.