

ARG63660 anti-CREM antibody

Package: 100 µg
Store at: -20°C

Summary

Product Description	Goat Polyclonal antibody recognizes CREM
Tested Reactivity	Hu
Predict Reactivity	Ms, Rat, Cow
Tested Application	WB
Specificity	This antibody is expected to recognise the following protein isoforms of human CREM protein: a (NP_853549.1); e (NP_874387.1); f (NP_874388.1); k (NP_874393.1); l (NP_874394.1); m (NP_877570.1); n (NP_877571.1); o (NP_877572.1); p (NP_877573.1); q (NP_878270.1); v (NP_898883.1). This antibody is not expected to cross-react with CREB protein.
Host	Goat
Clonality	Polyclonal
Isotype	IgG
Target Name	CREM
Species	Human
Immunogen	LETCLKDICSPKTDY
Conjugation	Un-conjugated
Alternate Names	cAMP-responsive element modulator; ICER; Inducible cAMP early repressor; CREM-2; hCREM-2

Application Instructions

Application table	Application	Dilution
	WB	0.3 - 1 µg/ml
Application Note	WB: Recommend incubate at RT for 1h. * The dilutions indicate recommended starting dilutions and the optimal dilutions or concentrations should be determined by the scientist.	
Observed Size	~ 35 kDa	

Properties

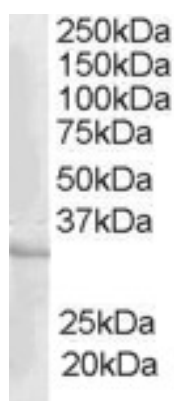
Form	Liquid
Purification	Purified from goat serum by antigen affinity chromatography.
Buffer	Tris saline (pH 7.3), 0.02% Sodium azide and 0.5% BSA.
Preservative	0.02% Sodium azide
Stabilizer	0.5% BSA
Concentration	0.5 mg/ml

Storage instruction	For continuous use, store undiluted antibody at 2-8°C for up to a week. For long-term storage, aliquot and store at -20°C or below. Storage in frost free freezers is not recommended. Avoid repeated freeze/thaw cycles. Suggest spin the vial prior to opening. The antibody solution should be gently mixed before use.
Note	For laboratory research only, not for drug, diagnostic or other use.

Bioinformation

Database links	GeneID: 1390 Human Swiss-port # Q03060 Human
Background	This gene encodes a bZIP transcription factor that binds to the cAMP responsive element found in many viral and cellular promoters. It is an important component of cAMP-mediated signal transduction during the spermatogenic cycle, as well as other complex processes. Alternative promoter and translation initiation site usage allows this gene to exert spatial and temporal specificity to cAMP responsiveness. Multiple alternatively spliced transcript variants encoding several different isoforms have been found for this gene, with some of them functioning as activators and some as repressors of transcription. [provided by RefSeq, Jul 2008]
Research Area	Gene Regulation antibody; Immune System antibody; Signaling Transduction antibody
Calculated Mw	37 kDa
PTM	Isoform 9 is ubiquitinated by CDC34 and RAD6B in order to be degraded by the proteasome. Stimulated by phosphorylation.

Images



ARG63660 anti-CREM antibody WB image

Western Blot: human heart lysate (RIPA buffer, 35 µg total protein per lane) stained with ARG63660 anti-CREM antibody at 1 µg/ml dilution.