

**ARG63658**  
**anti-TIM50 antibody**

Package: 100 µg

Store at: -20°C

### Summary

Product Description	Goat Polyclonal antibody recognizes TIM50
Tested Reactivity	Hu
Predict Reactivity	Ms, Rat, Cow, Dog
Tested Application	WB
Specificity	This antibody is expected to recognise an epitope corresponding to aa 396-409 of human TIM50.
Host	Goat
Clonality	Polyclonal
Isotype	IgG
Target Name	TIM50
Species	Human
Immunogen	CDVRTVLEHYALED
Conjugation	Un-conjugated
Alternate Names	TIM50L; Mitochondrial import inner membrane translocase subunit TIM50; TIM50

### Application Instructions

Application table	Application	Dilution
	WB	0.5 - 1.5 µg/ml
Application Note	WB: Recommend incubate at RT for 1h. * The dilutions indicate recommended starting dilutions and the optimal dilutions or concentrations should be determined by the scientist.	

### Properties

Form	Liquid
Purification	Purified from goat serum by antigen affinity chromatography.
Buffer	Tris saline (pH 7.3), 0.02% Sodium azide and 0.5% BSA.
Preservative	0.02% Sodium azide
Stabilizer	0.5% BSA
Concentration	0.5 mg/ml
Storage instruction	For continuous use, store undiluted antibody at 2-8°C for up to a week. For long-term storage, aliquot and store at -20°C or below. Storage in frost free freezers is not recommended. Avoid repeated freeze/thaw cycles. Suggest spin the vial prior to opening. The antibody solution should be gently mixed before use.

## Note

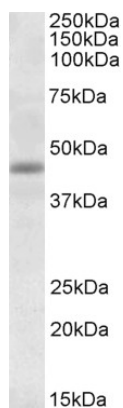
For laboratory research only, not for drug, diagnostic or other use.

## Bioinformation

---

Database links	<a href="#">GeneID: 92609 Human</a> <a href="#">Swiss-port # Q3ZCQ8 Human</a>
Gene Symbol	TIMM50
Gene Full Name	translocase of inner mitochondrial membrane 50 homolog (S. cerevisiae)
Function	Essential component of the TIM23 complex, a complex that mediates the translocation of transit peptide-containing proteins across the mitochondrial inner membrane. Has some phosphatase activity in vitro; however such activity may not be relevant in vivo. Isoform 2 may participate in the release of snRNPs and SMN from the Cajal body. [UniProt]
Research Area	Metabolism antibody; Signaling Transduction antibody
Calculated Mw	40 kDa

## Images



ARG63658 anti-TIM50 antibody WB image

Western blot: 35 µg of Human heart lysate (in RIPA buffer) stained with ARG63658 anti-TIM50 antibody at 1 µg/ml dilution and incubated at RT for 1 hour.