

ARG63650 anti-ARP2 / 3 subunit 1B antibody

Package: 100 µg
Store at: -20°C

Summary

Product Description	Goat Polyclonal antibody recognizes ARP2 / 3 subunit 1B
Tested Reactivity	Hu
Predict Reactivity	Ms, Rat, Cow, Dog, Pig
Tested Application	IHC-P, WB
Host	Goat
Clonality	Polyclonal
Isotype	IgG
Target Name	ARP2 / 3 subunit 1B
Species	Human
Immunogen	AYHSFLVEPISCH
Conjugation	Un-conjugated
Alternate Names	ARC41; p40-ARC; Actin-related protein 2/3 complex subunit 1B; Arp2/3 complex 41 kDa subunit; p41-ARC

Application Instructions

Application table	Application	Dilution
	IHC-P	5 µg/ml
	WB	2 - 4 µg/ml
Application Note	WB: Recommend incubate at RT for 1h. IHC-P: Antigen Retrieval: Steam tissue section in Citrate buffer (pH 6.0). * The dilutions indicate recommended starting dilutions and the optimal dilutions or concentrations should be determined by the scientist.	

Properties

Form	Liquid
Purification	Purified from goat serum by antigen affinity chromatography.
Buffer	Tris saline (pH 7.3), 0.02% Sodium azide and 0.5% BSA.
Preservative	0.02% Sodium azide
Stabilizer	0.5% BSA
Concentration	0.5 mg/ml
Storage instruction	For continuous use, store undiluted antibody at 2-8°C for up to a week. For long-term storage, aliquot and store at -20°C or below. Storage in frost free freezers is not recommended. Avoid repeated freeze/thaw cycles. Suggest spin the vial prior to opening. The antibody solution should be gently mixed

before use.

Note

For laboratory research only, not for drug, diagnostic or other use.

Bioinformation

Database links

[GeneID: 10095 Human](#)

[Swiss-port # O15143 Human](#)

Background

This gene encodes one of seven subunits of the human Arp2/3 protein complex. This subunit is a member of the SOP2 family of proteins and is most similar to the protein encoded by gene ARPC1A. The similarity between these two proteins suggests that they both may function as p41 subunit of the human Arp2/3 complex that has been implicated in the control of actin polymerization in cells. It is possible that the p41 subunit is involved in assembling and maintaining the structure of the Arp2/3 complex. Multiple versions of the p41 subunit may adapt the functions of the complex to different cell types or developmental stages. This protein also has a role in centrosomal homeostasis by being an activator and substrate of the Aurora A kinase. [provided by RefSeq, Mar 2011]

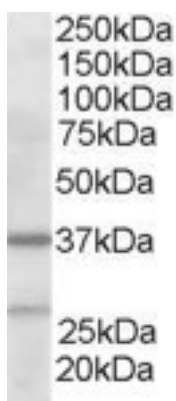
Research Area

Signaling Transduction antibody

Calculated Mw

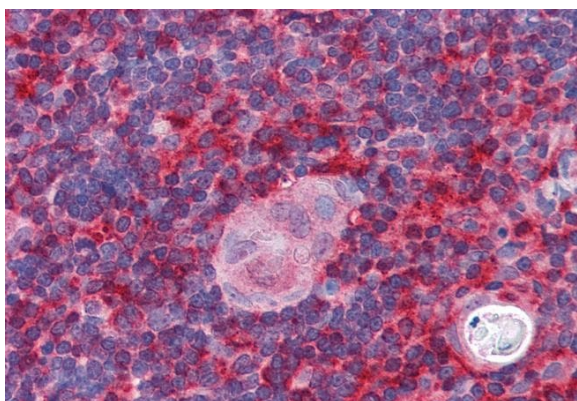
41 kDa

Images



ARG63650 anti-ARP2/3 subunit 1B antibody WB image

Western Blot: Human Liver lysate (RIPA buffer, 35 µg total protein per lane) stained with ARG63650 anti-ARP2/3 subunit 1B antibody at 2 µg/ml dilution.



ARG63650 anti-ARP2/3 subunit 1B antibody IHC-P image

Immunohistochemistry: Paraffin-embedded Human thymus tissue. Antigen Retrieval: Steam tissue section in Citrate buffer (pH 6.0). The tissue section was stained with ARG63650 anti-ARP2/3 subunit 1B antibody at 5 µg/ml dilution followed by AP-staining.