

ARG63637 anti-ELKS / RAB6IP2 antibody

Package: 100 µg
Store at: -20°C

Summary

Product Description	Goat Polyclonal antibody recognizes ELKS / RAB6IP2
Tested Reactivity	Hu
Predict Reactivity	Ms, Rat, Cow, Dog
Tested Application	WB
Specificity	This antibody is expected to recognize all reported isoforms (NP_829883.1; NP_829884.1).
Host	Goat
Clonality	Polyclonal
Isotype	IgG
Target Name	ELKS / RAB6IP2
Species	Human
Immunogen	YGSARSVGKVEPS-C
Conjugation	Un-conjugated
Alternate Names	RAB6IP2; ERC-1; Cast2; ELKS/Rab6-interacting/CAST family member 1; Rab6-interacting protein 2; ELKS

Application Instructions

Application table	Application	Dilution
	WB	0.1 - 0.3 µg/ml
Application Note	WB: Recommend incubate at RT for 1h. * The dilutions indicate recommended starting dilutions and the optimal dilutions or concentrations should be determined by the scientist.	

Properties

Form	Liquid
Purification	Purified from goat serum by antigen affinity chromatography.
Buffer	Tris saline (pH 7.3), 0.02% Sodium azide and 0.5% BSA.
Preservative	0.02% Sodium azide
Stabilizer	0.5% BSA
Concentration	0.5 mg/ml
Storage instruction	For continuous use, store undiluted antibody at 2-8°C for up to a week. For long-term storage, aliquot and store at -20°C or below. Storage in frost free freezers is not recommended. Avoid repeated freeze/thaw cycles. Suggest spin the vial prior to opening. The antibody solution should be gently mixed before use.

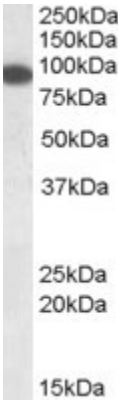
Note

For laboratory research only, not for drug, diagnostic or other use.

Bioinformation

Database links	GeneID: 23085 Human Swiss-port # Q8IUD2 Human
Background	The protein encoded by this gene is a member of a family of RIM-binding proteins. RIMs are active zone proteins that regulate neurotransmitter release. This gene has been found fused to the receptor-type tyrosine kinase gene RET by gene rearrangement due to the translocation t(10;12)(q11;p13). Multiple transcript variants encoding different isoforms have been found for this gene. [provided by RefSeq, Jul 2008]
Research Area	Neuroscience antibody
Calculated Mw	128 kDa

Images



ARG63637 anti-ELKS / RAB6IP2 antibody WB image

Western Blot: Human Pancreas lysate (35 µg protein in RIPA buffer) stained with ARG63637 anti-ELKS / RAB6IP2 antibody at 0.1 µg/ml dilution.