

ARG63632 anti-UBE2I / UBC9 antibody

Package: 100 µg
Store at: -20°C

Summary

Product Description	Goat Polyclonal antibody recognizes UBE2I / UBC9
Tested Reactivity	Hu, Rat
Predict Reactivity	Ms, Dog
Tested Application	IHC-P, WB
Specificity	This antibody is expected to recognize all reported isoforms (NP_003336.1, NP_919235.1, NP_919236.1 and NP_919237.1).
Host	Goat
Clonality	Polyclonal
Isotype	IgG
Target Name	UBE2I / UBC9
Species	Human
Immunogen	SGIALSRLAQERK-C
Conjugation	Un-conjugated
Alternate Names	UBC9; Ubiquitin-protein ligase I; EC 6.3.2.-; SUMO-conjugating enzyme UBC9; Ubiquitin carrier protein I; Ubiquitin-conjugating enzyme E2 I; SUMO-protein ligase; p18; C358B7.1; P18; Ubiquitin carrier protein 9

Application Instructions

Application table	Application	Dilution
	IHC-P	1 µg/ml
	WB	0.1 - 0.3 µg/ml
Application Note	IHC-P: Antigen Retrieval: Microwaved tissue section in Tris/EDTA buffer (pH 9.0). WB: Recommend incubate at RT for 1h. * The dilutions indicate recommended starting dilutions and the optimal dilutions or concentrations should be determined by the scientist.	

Properties

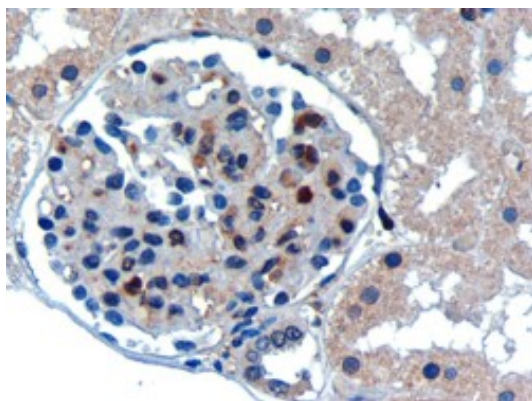
Form	Liquid
Purification	Purified from goat serum by antigen affinity chromatography.
Buffer	Tris saline (pH 7.3), 0.02% Sodium azide and 0.5% BSA.
Preservative	0.02% Sodium azide
Stabilizer	0.5% BSA
Concentration	0.5 mg/ml

Storage instruction	For continuous use, store undiluted antibody at 2-8°C for up to a week. For long-term storage, aliquot and store at -20°C or below. Storage in frost free freezers is not recommended. Avoid repeated freeze/thaw cycles. Suggest spin the vial prior to opening. The antibody solution should be gently mixed before use.
Note	For laboratory research only, not for drug, diagnostic or other use.

Bioinformation

Database links	GeneID: 25573 Rat GeneID: 7329 Human Swiss-port # P63279 Human Swiss-port # P63281 Rat
Background	The modification of proteins with ubiquitin is an important cellular mechanism for targeting abnormal or short-lived proteins for degradation. Ubiquitination involves at least three classes of enzymes: ubiquitin-activating enzymes, or E1s, ubiquitin-conjugating enzymes, or E2s, and ubiquitin-protein ligases, or E3s. This gene encodes a member of the E2 ubiquitin-conjugating enzyme family. Four alternatively spliced transcript variants encoding the same protein have been found for this gene. [provided by RefSeq, Jul 2008]
Research Area	Cell Biology and Cellular Response antibody; Gene Regulation antibody; Metabolism antibody
Calculated Mw	18 kDa
PTM	Phosphorylation at Ser-71 significantly enhances SUMOylation activity.

Images



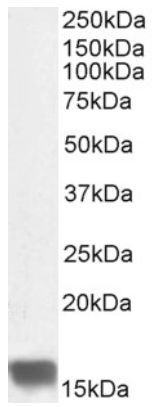
ARG63632 anti-UBE2I / UBC9 antibody IHC-P image

Immunohistochemistry: Paraffin-embedded Human kidney. (Microwaved antigen retrieval with Tris/EDTA buffer pH 9.0) stained with ARG63632 anti-UBE2I / UBC9 antibody at 0.3 µg/ml dilution followed by HRP-staining.



ARG63632 anti-UBE2I / UBC9 antibody WB image

Western blot: 35 µg of Human kidney lysate (in RIPA buffer) stained with ARG63632 anti-UBE2I / UBC9 antibody at 0.1 µg/ml dilution and incubated at RT for 1 hour.



ARG63632 anti-UBE2I / UBC9 antibody WB image

Western blot: 35 µg of Rat ovary lysate (in RIPA buffer) stained with ARG63632 anti-UBE2I / UBC9 antibody at 0.3 µg/ml dilution and incubated at RT for 1 hour.