

ARG63609 anti-FTCD / 58K Golgi protein antibody

Package: 100 µg
Store at: -20°C

Summary

Product Description	Goat Polyclonal antibody recognizes FTCD / 58K Golgi protein
Tested Reactivity	Hu
Predict Reactivity	Ms, Pig
Tested Application	WB
Specificity	Variants (NP_006648.1; NP_996848.1) encode the same protein.
Host	Goat
Clonality	Polyclonal
Isotype	IgG
Target Name	FTCD / 58K Golgi protein
Species	Human
Immunogen	SQLVECVPNFSEGKNQ
Conjugation	Un-conjugated
Alternate Names	EC 2.1.2.5; LCHC1; Formiminotetrahydrofolate cyclodeaminase; Formimidoyltransferase-cyclodeaminase; Formiminotransferase-cyclodeaminase; Glutamate formiminotransferase; Glutamate formyltransferase; FTCD; EC 4.3.1.4

Application Instructions

Application table	Application	Dilution
	WB	0.05 - 0.2 µg/ml
Application Note	WB: Recommend incubate at RT for 1h. * The dilutions indicate recommended starting dilutions and the optimal dilutions or concentrations should be determined by the scientist.	

Properties

Form	Liquid
Purification	Purified from goat serum by antigen affinity chromatography.
Buffer	Tris saline (pH 7.3), 0.02% Sodium azide and 0.5% BSA.
Preservative	0.02% Sodium azide
Stabilizer	0.5% BSA
Concentration	0.5 mg/ml
Storage instruction	For continuous use, store undiluted antibody at 2-8°C for up to a week. For long-term storage, aliquot and store at -20°C or below. Storage in frost free freezers is not recommended. Avoid repeated freeze/thaw cycles. Suggest spin the vial prior to opening. The antibody solution should be gently mixed

before use.

Note

For laboratory research only, not for drug, diagnostic or other use.

Bioinformation

Database links

[GeneID: 10841 Human](#)

[Swiss-port # O95954 Human](#)

Background

The protein encoded by this gene is a bifunctional enzyme that channels 1-carbon units from formiminoglutamate, a metabolite of the histidine degradation pathway, to the folate pool. Mutations in this gene are associated with glutamate formiminotransferase deficiency. Alternatively spliced transcript variants have been found for this gene.[provided by RefSeq, Dec 2009]

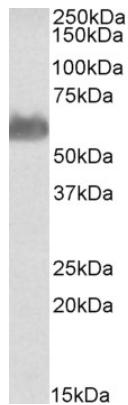
Research Area

Controls and Markers antibody; Metabolism antibody; Signaling Transduction antibody

Calculated Mw

59 kDa

Images



ARG63609 anti-FTCD / 58K Golgi protein antibody WB image

Western blot: 35 µg of Human Liver lysate (in RIPA buffer) stained with ARG63609 anti-FTCD / 58K Golgi protein antibody at 0.05 µg/ml dilution and incubated at RT for 1 hour.