

## ARG63593 anti-Annexin A10 / Annexin 14 antibody

Package: 100 µg  
Store at: -20°C

### Summary

Product Description	Goat Polyclonal antibody recognizes Annexin A10 / Annexin 14
Tested Reactivity	Hu
Predict Reactivity	Ms, Rat, Cow
Tested Application	IHC-P
Host	Goat
Clonality	Polyclonal
Isotype	IgG
Target Name	Annexin A10 / Annexin 14
Species	Human
Immunogen	FCGDYVQGTIFPAPN
Conjugation	Un-conjugated
Alternate Names	Annexin-14; ANX14; Annexin A10; Annexin-10

### Application Instructions

Application table	Application	Dilution
	IHC-P	3 - 5 µg/ml
Application Note	IHC-P: Antigen Retrieval: Steam tissue section in Citrate buffer (pH 6.0). * The dilutions indicate recommended starting dilutions and the optimal dilutions or concentrations should be determined by the scientist.	

### Properties

Form	Liquid
Purification	Purified from goat serum by antigen affinity chromatography.
Buffer	Tris saline (pH 7.3), 0.02% Sodium azide and 0.5% BSA.
Preservative	0.02% Sodium azide
Stabilizer	0.5% BSA
Concentration	0.5 mg/ml
Storage instruction	For continuous use, store undiluted antibody at 2-8°C for up to a week. For long-term storage, aliquot and store at -20°C or below. Storage in frost free freezers is not recommended. Avoid repeated freeze/thaw cycles. Suggest spin the vial prior to opening. The antibody solution should be gently mixed before use.
Note	For laboratory research only, not for drug, diagnostic or other use.

## Bioinformation

---

### Database links

[GeneID: 11199 Human](#)

[Swiss-port # Q9UJ72 Human](#)

### Background

This gene encodes a member of the annexin family. Members of this calcium-dependent phospholipid-binding protein family play a role in the regulation of cellular growth and in signal transduction pathways. The function of this gene has not yet been determined. [provided by RefSeq, Jul 2008]

### Research Area

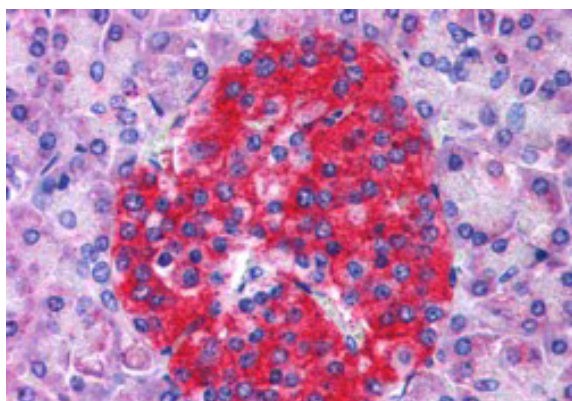
Signaling Transduction antibody

### Calculated Mw

37 kDa

## Images

---



ARG63593 anti-Annexin A10 / Annexin 14 antibody IHC-P image

Immunohistochemistry: paraffin embedded Human Pancreas.  
(Steamed antigen retrieval with citrate buffer pH 6) stained with  
ARG63593 anti-Annexin A10 / Annexin 14 antibody at 3.8 µg/ml  
dilution followed by AP-staining.