

## ARG63592 anti-ARPC3 antibody

Package: 100 µg  
Store at: -20°C

### Summary

Product Description	Goat Polyclonal antibody recognizes ARPC3
Tested Reactivity	Hu, Ms
Predict Reactivity	Cow, Rat, Dog
Tested Application	WB
Specificity	Please note there are two hypothetical proteins called "similar to the Arp2/3 protein complex subunit p21-Arc" that are virtually identical (CAC14083, XP_208062).
Host	Goat
Clonality	Polyclonal
Isotype	IgG
Target Name	ARPC3
Species	Human
Immunogen	C-RQFMNKSLSGPGQ
Conjugation	Un-conjugated
Alternate Names	ARC21; Arp2/3 complex 21 kDa subunit; p21-ARC; Actin-related protein 2/3 complex subunit 3; p21-Arc

### Application Instructions

Application table	Application	Dilution
	WB	1 - 3 µg/ml
Application Note	WB: Recommend incubate at RT for 1h. * The dilutions indicate recommended starting dilutions and the optimal dilutions or concentrations should be determined by the scientist.	

### Properties

Form	Liquid
Purification	Purified from goat serum by antigen affinity chromatography.
Buffer	Tris saline (pH 7.3), 0.02% Sodium azide and 0.5% BSA.
Preservative	0.02% Sodium azide
Stabilizer	0.5% BSA
Concentration	0.5 mg/ml
Storage instruction	For continuous use, store undiluted antibody at 2-8°C for up to a week. For long-term storage, aliquot and store at -20°C or below. Storage in frost free freezers is not recommended. Avoid repeated freeze/thaw cycles. Suggest spin the vial prior to opening. The antibody solution should be gently mixed before use.

## Note

For laboratory research only, not for drug, diagnostic or other use.

## Bioinformation

---

### Database links

[GeneID: 10094 Human](#)

[GeneID: 56378 Mouse](#)

[Swiss-port # O15145 Human](#)

[Swiss-port # Q9JM76 Mouse](#)

### Background

This gene encodes one of seven subunits of the human Arp2/3 protein complex. The Arp2/3 protein complex has been implicated in the control of actin polymerization in cells and has been conserved through evolution. The exact role of the protein encoded by this gene, the p21 subunit, has yet to be determined. [provided by RefSeq, Jul 2008]

### Research Area

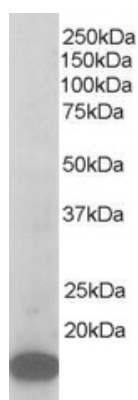
Signaling Transduction antibody

### Calculated Mw

21 kDa

## Images

---



ARG63592 anti-ARPC3 antibody WB image

Western Blot: Mouse Brain lysate (RIPA buffer, 35 µg total protein per lane) stained with ARG63592 anti-ARPC3 antibody at 1 µg/ml dilution.