

ARG63572 anti-LAT1 antibody

Package: 100 µg
Store at: -20°C

Summary

Product Description	Goat Polyclonal antibody recognizes LAT1
Tested Reactivity	Hu
Predict Reactivity	Ms, Rat
Tested Application	WB
Specificity	This antibody is expected to recognize isoform a (NP_055202.1), isoform b (NP_001014987.1 and NP_001014989.1) and isoform c (NP_001014988.1).
Host	Goat
Clonality	Polyclonal
Isotype	IgG
Target Name	LAT1
Species	Human
Immunogen	C-GAPDYENLQELN
Conjugation	Un-conjugated
Alternate Names	Linker for activation of T-cells family member 1; 36 kDa phospho-tyrosine adapter protein; pp36; LAT1; p36-38

Application Instructions

Application table	Application	Dilution
	WB	0.01 - 0.03 µg/ml
Application Note	WB: Recommend incubate at RT for 1h. * The dilutions indicate recommended starting dilutions and the optimal dilutions or concentrations should be determined by the scientist.	

Properties

Form	Liquid
Purification	Purified from goat serum by antigen affinity chromatography.
Buffer	Tris saline (pH 7.3), 0.02% Sodium azide and 0.5% BSA.
Preservative	0.02% Sodium azide
Stabilizer	0.5% BSA
Concentration	0.5 mg/ml
Storage instruction	For continuous use, store undiluted antibody at 2-8°C for up to a week. For long-term storage, aliquot and store at -20°C or below. Storage in frost free freezers is not recommended. Avoid repeated freeze/thaw cycles. Suggest spin the vial prior to opening. The antibody solution should be gently mixed

before use.

Note

For laboratory research only, not for drug, diagnostic or other use.

Bioinformation

Database links

[GeneID: 27040 Human](#)

[Swiss-port # O43561 Human](#)

Background

The protein encoded by this gene is phosphorylated by ZAP-70/Syk protein tyrosine kinases following activation of the T-cell antigen receptor (TCR) signal transduction pathway. This transmembrane protein localizes to lipid rafts and acts as a docking site for SH2 domain-containing proteins. Upon phosphorylation, this protein recruits multiple adaptor proteins and downstream signaling molecules into multimolecular signaling complexes located near the site of TCR engagement. Alternative splicing results in multiple transcript variants encoding different isoforms. [provided by RefSeq, Jul 2008]

Research Area

Immune System antibody; Signaling Transduction antibody

Calculated Mw

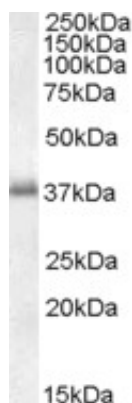
28 kDa

PTM

Phosphorylated on tyrosines by ZAP70 upon TCR activation, or by SYK upon other immunoreceptor activation; which leads to the recruitment of multiple signaling molecules. Is one of the most prominently tyrosine-phosphorylated proteins detected following TCR engagement. May be dephosphorylated by PTPRJ. Phosphorylated by ITK leading to the recruitment of VAV1 to LAT-containing complexes.

Palmitoylation of Cys-26 and Cys-29 is required for raft targeting and efficient phosphorylation.

Images



ARG63572 anti-LAT1 antibody WB image

Western Blot: peripheral blood mononucleocytes lysate (35 µg protein in RIPA buffer) stained with ARG63572 anti-LAT1 antibody at 0.01 µg/ml dilution.