

ARG63539 anti-TEM8 / Anthrax Toxin Receptor 1 antibody

Package: 100 µg
Store at: -20°C

Summary

| | |
|---------------------|---|
| Product Description | Goat Polyclonal antibody recognizes TEM8 / Anthrax Toxin Receptor 1 |
| Tested Reactivity | Hu |
| Predict Reactivity | Cow, Rat, Dog |
| Tested Application | ICC/IF |
| Specificity | This antibody is expected to recognise variant 1 (NP_115584) only. |
| Host | Goat |
| Clonality | Polyclonal |
| Isotype | IgG |
| Target Name | TEM8 / Anthrax Toxin Receptor 1 |
| Species | Human |
| Immunogen | C-RAPPPSRPPRPSV |
| Conjugation | Un-conjugated |
| Alternate Names | Tumor endothelial marker 8; Anthrax toxin receptor 1; ATR; TEM8; GAPO |

Application Instructions

| | | |
|-------------------|--|----------|
| Application table | Application | Dilution |
| | ICC/IF | 10 µg/ml |
| Application Note | * The dilutions indicate recommended starting dilutions and the optimal dilutions or concentrations should be determined by the scientist. | |

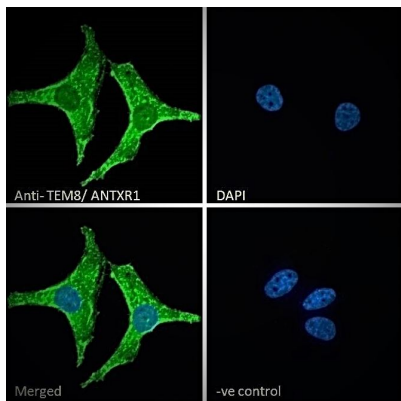
Properties

| | |
|---------------------|--|
| Form | Liquid |
| Purification | Purified from goat serum by antigen affinity chromatography. |
| Buffer | Tris saline (pH 7.3), 0.02% Sodium azide and 0.5% BSA. |
| Preservative | 0.02% Sodium azide |
| Stabilizer | 0.5% BSA |
| Concentration | 0.5 mg/ml |
| Storage instruction | For continuous use, store undiluted antibody at 2-8°C for up to a week. For long-term storage, aliquot and store at -20°C or below. Storage in frost free freezers is not recommended. Avoid repeated freeze/thaw cycles. Suggest spin the vial prior to opening. The antibody solution should be gently mixed before use. |
| Note | For laboratory research only, not for drug, diagnostic or other use. |

Bioinformation

| | |
|----------------|---|
| Database links | GeneID: 84168 Human Swiss-port # Q9H6X2 Human |
| Background | This gene encodes a type I transmembrane protein and is a tumor-specific endothelial marker that has been implicated in colorectal cancer. The encoded protein has been shown to also be a docking protein or receptor for Bacillus anthracis toxin, the causative agent of the disease, anthrax. The binding of the protective antigen (PA) component, of the tripartite anthrax toxin, to this receptor protein mediates delivery of toxin components to the cytosol of cells. Once inside the cell, the other two components of anthrax toxin, edema factor (EF) and lethal factor (LF) disrupt normal cellular processes. Three alternatively spliced variants that encode different protein isoforms have been described. [provided by RefSeq, Oct 2008] |
| Research Area | Cell Biology and Cellular Response antibody; Controls and Markers antibody; Microbiology and Infectious Disease antibody |
| Calculated Mw | 63 kDa |

Images



ARG63539 anti-TEM8 / Anthrax Toxin Receptor 1 antibody ICC/IF image

Immunofluorescence: Paraformaldehyde-fixed HeLa cells permeabilized with 0.15% Triton. Cells were stained with ARG63539 anti-TEM8 / Anthrax Toxin Receptor 1 antibody (green) at 10 µg/ml dilution for 1 hour. DAPI (blue) for nuclear staining. Negative control: Unimmunized goat IgG (green) at 10 µg/ml dilution.