

ARG63532 anti-CPT1B antibody

Package: 100 µg
Store at: -20°C

Summary

Product Description	Goat Polyclonal antibody recognizes CPT1B
Tested Reactivity	Hu
Tested Application	IHC-P
Specificity	This antibody is expected to recognise human isoforms a (NP_689452.1; NP_689451.1; NP_004368.1; NP_001138609.1; NP_001138607.1), isoform c (NP_001138606.1) and isoform d (NP_001138608.1).
Host	Goat
Clonality	Polyclonal
Isotype	IgG
Target Name	CPT1B
Immunogen	C-DIADLFQVPKAYS
Conjugation	Un-conjugated
Alternate Names	CPT1-M; Carnitine O-palmitoyltransferase 1, muscle isoform; CPT1M; Carnitine palmitoyltransferase I-like protein; CPTI; Carnitine palmitoyltransferase 1B; Carnitine O-palmitoyltransferase I, muscle isoform; MCPT1; CPTI-M; M-CPT1; EC 2.3.1.21; CPT I; MCCPT1

Application Instructions

Application table	Application	Dilution
	IHC-P	3 - 5 µg/ml
Application Note	IHC-P: Antigen Retrieval: Steam tissue section in Citrate buffer (pH 6.0). * The dilutions indicate recommended starting dilutions and the optimal dilutions or concentrations should be determined by the scientist.	

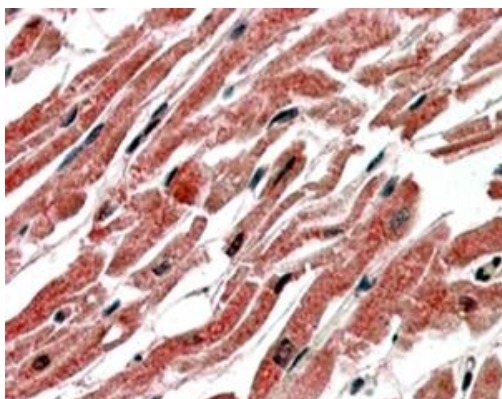
Properties

Form	Liquid
Purification	Purified from goat serum by antigen affinity chromatography.
Buffer	Tris saline (pH 7.3), 0.02% Sodium azide and 0.5% BSA.
Preservative	0.02% Sodium azide
Stabilizer	0.5% BSA
Concentration	0.5 mg/ml
Storage instruction	For continuous use, store undiluted antibody at 2-8°C for up to a week. For long-term storage, aliquot and store at -20°C or below. Storage in frost free freezers is not recommended. Avoid repeated freeze/thaw cycles. Suggest spin the vial prior to opening. The antibody solution should be gently mixed before use.
Note	For laboratory research only, not for drug, diagnostic or other use.

Bioinformation

Database links	GeneID: 1375 Human Swiss-port # Q92523 Human
Background	The protein encoded by this gene, a member of the carnitine/choline acetyltransferase family, is the rate-controlling enzyme of the long-chain fatty acid beta-oxidation pathway in muscle mitochondria. This enzyme is required for the net transport of long-chain fatty acyl-CoAs from the cytoplasm into the mitochondria. Multiple transcript variants encoding different isoforms have been found for this gene, and read-through transcripts are expressed from the upstream locus that include exons from this gene. [provided by RefSeq, Jun 2009]
Research Area	Cancer antibody; Cell Biology and Cellular Response antibody; Metabolism antibody; Signaling Transduction antibody
Calculated Mw	88 kDa

Images



ARG63532 anti-CPT1B antibody IHC-P image

Immunohistochemistry: paraffin embedded Human Heart. (Steamed antigen retrieval with citrate buffer pH 6) stained with ARG63532 anti-CPT1B (isoform 1) antibody at 3.8 µg/ml dilution followed by AP-staining.