

ARG63527
anti-DUSP16 antibodyPackage: 100 µg
Store at: -20°C

Summary

| | |
|---------------------|--|
| Product Description | Goat Polyclonal antibody recognizes DUSP16 |
| Tested Reactivity | Hu |
| Predict Reactivity | Ms, Rat, Cow, Dog |
| Tested Application | IHC-P |
| Host | Goat |
| Clonality | Polyclonal |
| Isotype | IgG |
| Target Name | DUSP16 |
| Species | Human |
| Immunogen | AHEMIGTQIVTER-C |
| Conjugation | Un-conjugated |
| Alternate Names | MKP-7; Dual specificity protein phosphatase 16; MAP kinase phosphatase 7; EC 3.1.3.16; Mitogen-activated protein kinase phosphatase 7; EC 3.1.3.48; MKP7 |

Application Instructions

| | | |
|-------------------|--|-------------|
| Application table | Application | Dilution |
| | IHC-P | 2 - 4 µg/ml |
| Application Note | IHC-P: Antigen Retrieval: Steam tissue section in Citrate buffer (pH 6.0). * The dilutions indicate recommended starting dilutions and the optimal dilutions or concentrations should be determined by the scientist. | |

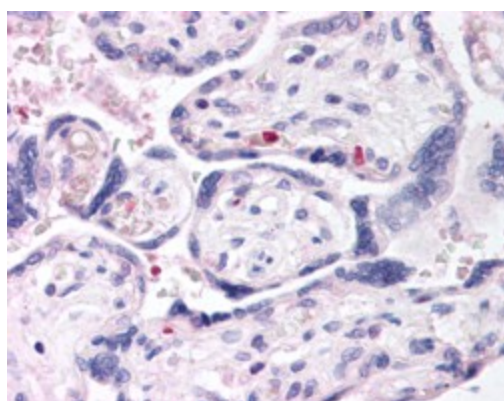
Properties

| | |
|---------------------|--|
| Form | Liquid |
| Purification | Purified from goat serum by antigen affinity chromatography. |
| Buffer | Tris saline (pH 7.3), 0.02% Sodium azide and 0.5% BSA. |
| Preservative | 0.02% Sodium azide |
| Stabilizer | 0.5% BSA |
| Concentration | 0.5 mg/ml |
| Storage instruction | For continuous use, store undiluted antibody at 2-8°C for up to a week. For long-term storage, aliquot and store at -20°C or below. Storage in frost free freezers is not recommended. Avoid repeated freeze/thaw cycles. Suggest spin the vial prior to opening. The antibody solution should be gently mixed before use. |
| Note | For laboratory research only, not for drug, diagnostic or other use. |

Bioinformation

| | |
|----------------|--|
| Database links | GeneID: 80824 Human Swiss-port # Q9BY84 Human |
| Background | This gene encodes a mitogen-activated protein kinase phosphatase that is a member of the dual specificity protein phosphatase subfamily. These phosphatases inactivate their target kinases by dephosphorylating both the phosphoserine/threonine and phosphotyrosine residues. The encoded protein specifically regulates the c-Jun amino-terminal kinase (JNK) and extracellular signal-regulated kinase (ERK) pathways.[provided by RefSeq, May 2010] |
| Research Area | Signaling Transduction antibody |
| Calculated Mw | 73 kDa |
| PTM | Phosphorylated at Ser-446 by MAPK1/ERK2, which prevents its degradation, and thereby stabilizes it and blocks JNK MAPK activity. (Microbial infection) Acetylated at Lys-55 by the M.tuberculosis Eis protein; this leads to the inhibition of JNK-dependent autophagy, phagosome maturation, and ROS (reactive oxygen species) generation for enhanced intracellular survival of M.tuberculosis. |

Images



ARG63527 anti-DUSP16 antibody IHC-P image

Immunohistochemistry: paraffin embedded Human Placenta.
(Steamed antigen retrieval with citrate buffer pH 6) stained with
ARG63527 anti-DUSP16 antibody at 2.5 µg/ml dilution followed by
AP-staining.