

**ARG63526**  
**anti-CLPP antibody**Package: 100 µg  
Store at: -20°C**Summary**

Product Description	Goat Polyclonal antibody recognizes CLPP
Tested Reactivity	Hu
Tested Application	IHC-P, WB
Host	Goat
Clonality	Polyclonal
Isotype	IgG
Target Name	CLPP
Species	Human
Immunogen	C-EAAPAAEPVPAST
Conjugation	Un-conjugated
Alternate Names	ATP-dependent Clp protease proteolytic subunit, mitochondrial; PRLTS3; Endopeptidase Clp; DFN81; EC 3.4.21.92

**Application Instructions**

Application table	Application	Dilution
	IHC-P	2 - 4 µg/ml
	WB	1 - 3 µg/ml
Application Note	IHC-P: Antigen Retrieval: Steam tissue section in Citrate buffer (pH 6.0). WB: Recommend incubate at RT for 1h. * The dilutions indicate recommended starting dilutions and the optimal dilutions or concentrations should be determined by the scientist.	

**Properties**

Form	Liquid
Purification	Purified from goat serum by antigen affinity chromatography.
Buffer	Tris saline (pH 7.3), 0.02% Sodium azide and 0.5% BSA.
Preservative	0.02% Sodium azide
Stabilizer	0.5% BSA
Concentration	0.5 mg/ml
Storage instruction	For continuous use, store undiluted antibody at 2-8°C for up to a week. For long-term storage, aliquot and store at -20°C or below. Storage in frost free freezers is not recommended. Avoid repeated freeze/thaw cycles. Suggest spin the vial prior to opening. The antibody solution should be gently mixed before use.

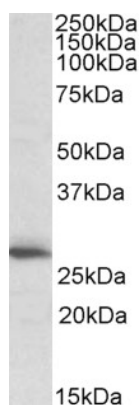
## Note

For laboratory research only, not for drug, diagnostic or other use.

## Bioinformation

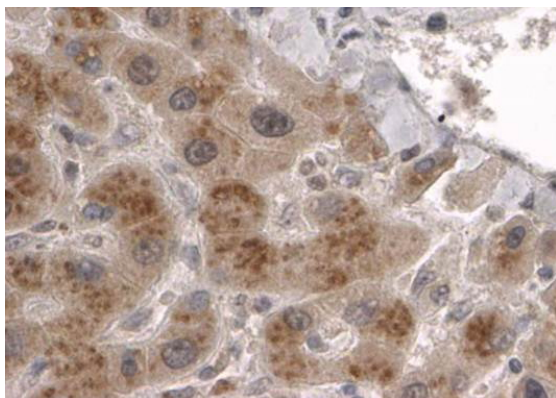
Database links	<a href="#">GeneID: 8192 Human</a> <a href="#">Swiss-port # Q16740 Human</a>
Background	The protein encoded by this gene belongs to the peptidase family S14 and hydrolyzes proteins into small peptides in the presence of ATP and magnesium. The protein is transported into mitochondrial matrix and is associated with the inner mitochondrial membrane. [provided by RefSeq, Jul 2008]
Highlight	Related products: <a href="#">Anti-Goat IgG secondary antibodies:</a> Related poster download: <a href="#">The Structure &amp; Functions of Mitochondria.pdf</a>
Research Area	Metabolism antibody; Signaling Transduction antibody
Calculated Mw	30 kDa

## Images



ARG63526 anti-CLPP antibody WB image

Western Blot: Human Heart lysate (35 µg protein in RIPA buffer) stained with ARG63526 anti-CLPP antibody at 1 µg/ml dilution.



ARG63526 anti-CLPP antibody IHC-P image

Immunohistochemistry: paraffin embedded Human Liver. (Steamed antigen retrieval with citrate buffer pH 6) stained with ARG63526 anti-CLPP antibody at 2 µg/ml dilution followed by HRP-staining.