

## ARG63490 anti-FENS1 / WDFY1 antibody

Package: 100 µg  
Store at: -20°C

### Summary

Product Description	Goat Polyclonal antibody recognizes FENS1 / WDFY1
Tested Reactivity	Hu
Predict Reactivity	Ms, Rat
Tested Application	IHC-P
Specificity	This antibody is expected to recognise both reported isoforms (as represented by NP_065881 and NP_848127)
Host	Goat
Clonality	Polyclonal
Isotype	IgG
Target Name	FENS1 / WDFY1
Species	Human
Immunogen	VVGCSLATGFSPH
Conjugation	Un-conjugated
Alternate Names	FENS-1; Zinc finger FYVE domain-containing protein 17; ZFYVE17; Phosphoinositide-binding protein 1; WD40- and FYVE domain-containing protein 1; WD repeat and FYVE domain-containing protein 1; WDF1

### Application Instructions

Application table	Application	Dilution
	IHC-P	4 µg/ml
Application Note	IHC-P: Antigen Retrieval: Steam tissue section in Tris/EDTA buffer (pH 9.0). * The dilutions indicate recommended starting dilutions and the optimal dilutions or concentrations should be determined by the scientist.	

### Properties

Form	Liquid
Purification	Purified from goat serum by antigen affinity chromatography.
Buffer	Tris saline (pH 7.3), 0.02% Sodium azide and 0.5% BSA.
Preservative	0.02% Sodium azide
Stabilizer	0.5% BSA
Concentration	0.5 mg/ml
Storage instruction	For continuous use, store undiluted antibody at 2-8°C for up to a week. For long-term storage, aliquot and store at -20°C or below. Storage in frost free freezers is not recommended. Avoid repeated

freeze/thaw cycles. Suggest spin the vial prior to opening. The antibody solution should be gently mixed before use.

Note

For laboratory research only, not for drug, diagnostic or other use.

## Bioinformation

---

Database links

[GeneID: 57590 Human](#)

[Swiss-port # Q8IWB7 Human](#)

Background

The FYVE domain mediates the recruitment of proteins involved in membrane trafficking and cell signaling to phosphatidylinositol 3-phosphate (PtdIns(3)P)-containing membranes. This gene encodes a protein which contains a single FYVE domain and multiple WD40 repeats. This protein is localized to endosomes. [provided by RefSeq, Jul 2008]

Research Area

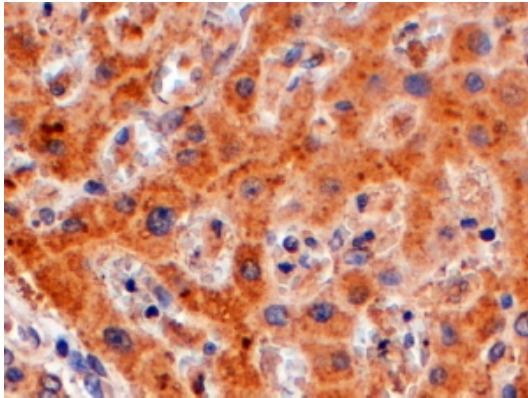
Controls and Markers antibody; Signaling Transduction antibody

Calculated Mw

46 kDa

## Images

---



ARG63490 anti-FENS1 / WDFY1 antibody IHC-P image

Immunohistochemistry: Paraffin-embedded Human liver tissue.  
Antigen Retrieval: Steam tissue section in Tris/EDTA buffer (pH 9.0).  
The tissue section was stained with ARG63490 anti-FENS1 / WDFY1 antibody at 4 µg/ml dilution, followed by HRP-staining.