

ARG63416 anti-SM22 alpha / Transgelin antibody

Package: 100 µg, 50 µg
Store at: -20°C

Summary

Product Description	Goat Polyclonal antibody recognizes SM22 Alpha / Transgelin
Tested Reactivity	Hu
Predict Reactivity	Ms, Rat, Cow, Dog
Tested Application	IHC-P, WB
Specificity	NP_003177.2 and NP_001001522.1 represent identical protein. The transgelin protein is found in fibroblasts and smooth muscle and is known as a transformation or shape change protein that is involved with actin cross-linking. Transgelin is one of the earliest markers of differentiated smooth muscle cells and recent evidence suggests that transgelin acts as a tumour suppressor.
Host	Goat
Clonality	Polyclonal
Isotype	IgG
Target Name	SM22 alpha / Transgelin
Species	Human
Immunogen	C-MTGYGRPRQIIS
Conjugation	Un-conjugated
Alternate Names	SM22-alpha; 22 kDa actin-binding protein; Smooth muscle protein 22-alpha; Protein WS3-10; Transgelin; WS3-10; TAGLN1; SMCC; SM22

Application Instructions

Application table	Application	Dilution
	IHC-P	Assay - dependent
	WB	1:500 - 1:2000
Application Note	WB: Recommend incubate at RT for 1h. IHC-P: Antigen Retrieval: Steam tissue section in Citrate buffer (pH 6.0). * The dilutions indicate recommended starting dilutions and the optimal dilutions or concentrations should be determined by the scientist.	

Properties

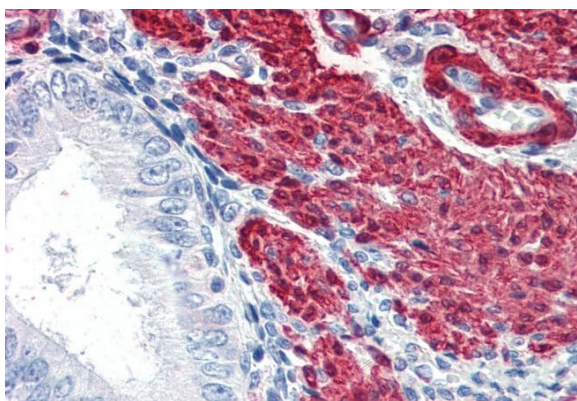
Form	Liquid
Purification	Purified from goat serum by antigen affinity chromatography.
Buffer	Tris saline (pH 7.3), 0.02% Sodium azide and 0.5% BSA.
Preservative	0.02% Sodium azide
Stabilizer	0.5% BSA

Concentration	0.5 mg/ml
Storage instruction	For continuous use, store undiluted antibody at 2-8°C for up to a week. For long-term storage, aliquot and store at -20°C or below. Storage in frost free freezers is not recommended. Avoid repeated freeze/thaw cycles. Suggest spin the vial prior to opening. The antibody solution should be gently mixed before use.
Note	For laboratory research only, not for drug, diagnostic or other use.

Bioinformation

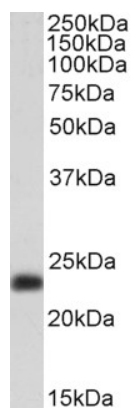
Database links	GeneID: 6876 Human Swiss-port # Q01995 Human
Background	The protein encoded by this gene is a transformation and shape-change sensitive actin cross-linking/gelling protein found in fibroblasts and smooth muscle. Its expression is down-regulated in many cell lines, and this down-regulation may be an early and sensitive marker for the onset of transformation. A functional role of this protein is unclear. Two transcript variants encoding the same protein have been found for this gene. [provided by RefSeq, Jul 2008]
Highlight	<p>Related Antibody Duos and Panels: ARG30293 Smooth Muscle Marker</p> <p>Related products: SM22 alpha antibodies; SM22 alpha Duos / Panels; Anti-Goat IgG secondary antibodies;</p> <p>Related news: Besides tumor suppression, what's p53 busy for during embryogenesis?</p>
Research Area	Cell Biology and Cellular Response antibody; Controls and Markers antibody; Signaling Transduction antibody; Smooth Muscle Marker antibody
Calculated Mw	23 kDa

Images



ARG63416 anti-SM22 alpha / Transgelin antibody IHC-P image

Immunohistochemistry: Paraffin-embedded Human uterus tissue. Antigen Retrieval: Steam tissue section in Citrate buffer (pH 6.0). The tissue section was stained with ARG63416 anti-SM22 alpha / Transgelin antibody at 5 µg/ml dilution followed by AP-staining.



ARG63416 anti-SM22 alpha / Transgelin antibody WB image

Western blot: 35 µg of Human testis lysate (in RIPA buffer) stained with ARG63416 anti-SM22 alpha / Transgelin antibody at 0.3 µg/ml dilution and incubated at RT for 1 hour.