

ARG63363 anti-MARK4L antibody

Package: 100 µg
Store at: -20°C

Summary

Product Description	Goat Polyclonal antibody recognizes MARK4L
Tested Reactivity	Hu
Tested Application	WB
Specificity	This antibody is expected to recognize the reported long isoform 1 (NP_113605.2) only.
Host	Goat
Clonality	Polyclonal
Isotype	IgG
Target Name	MARK4L
Immunogen	IKRKPPPGCSDSPGV
Conjugation	Un-conjugated
Alternate Names	MARKL1L; MARK4S; MARKL1; PAR-1D; MARK4L; MAP/microtubule affinity-regulating kinase-like 1; EC 2.7.11.1; MAP/microtubule affinity-regulating kinase 4

Application Instructions

Application table	Application	Dilution
	WB	0.3 - 1 µg/ml
Application Note	WB: Recommend incubate at RT for 1h. * The dilutions indicate recommended starting dilutions and the optimal dilutions or concentrations should be determined by the scientist.	

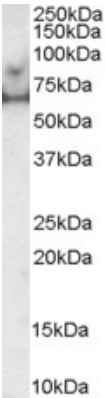
Properties

Form	Liquid
Purification	Purified from goat serum by antigen affinity chromatography.
Buffer	Tris saline (pH 7.3), 0.02% Sodium azide and 0.5% BSA.
Preservative	0.02% Sodium azide
Stabilizer	0.5% BSA
Concentration	0.5 mg/ml
Storage instruction	For continuous use, store undiluted antibody at 2-8°C for up to a week. For long-term storage, aliquot and store at -20°C or below. Storage in frost free freezers is not recommended. Avoid repeated freeze/thaw cycles. Suggest spin the vial prior to opening. The antibody solution should be gently mixed before use.
Note	For laboratory research only, not for drug, diagnostic or other use.

Bioinformation

Database links	GeneID: 57787 Human Swiss-port # Q96L34 Human
Background	This gene encodes a member of the microtubule affinity-regulating kinase family. These protein kinases phosphorylate microtubule-associated proteins and regulate the transition between stable and dynamic microtubules. The encoded protein is associated with the centrosome throughout mitosis and may be involved in cell cycle control. Expression of this gene is a potential marker for cancer, and the encoded protein may also play a role in Alzheimer's disease. Pseudogenes of this gene are located on both the short and long arm of chromosome 3. Alternatively spliced transcript variants encoding multiple isoforms have been observed for this gene. [provided by RefSeq, Dec 2010]
Research Area	Signaling Transduction antibody
Calculated Mw	83 kDa
PTM	Ubiquitinated with 'Lys-29'- and 'Lys-33'-linked polyubiquitins which appear to impede LKB1-mediated phosphorylation. Deubiquitinated by USP9X. Phosphorylated at Thr-214 by STK11/LKB1 in complex with STE20-related adapter-alpha (STRADA) pseudo kinase and CAB39 (PubMed:14976552). Phosphorylated throughout the cell cycle (PubMed:25123532).

Images



ARG63363 anti-MARK4L antibody WB image

Western Blot: human prostate lysate (35 µg protein in RIPA buffer) stained with ARG63363 anti-MARK4 antibody at 0.5 µg/ml dilution.