

## ARG63337 anti-ARH / LDL Receptor adaptor antibody

Package: 100 µg  
Store at: -20°C

### Summary

Product Description	Goat Polyclonal antibody recognizes ARH / LDL Receptor adaptor
Tested Reactivity	Hu
Predict Reactivity	Ms, Rat, Cow, Dog
Tested Application	ICC/IF
Host	Goat
Clonality	Polyclonal
Isotype	IgG
Target Name	ARH / LDL Receptor adaptor
Species	Human
Immunogen	DALKSAGRALIRS-C
Conjugation	Un-conjugated
Alternate Names	ARH1; ARH2; Low density lipoprotein receptor adapter protein 1; Autosomal recessive hypercholesterolemia protein; FHCB2; ARH; FHCB1

### Application Instructions

Application table	Application	Dilution
	ICC/IF	10 µg/ml
Application Note	* The dilutions indicate recommended starting dilutions and the optimal dilutions or concentrations should be determined by the scientist.	

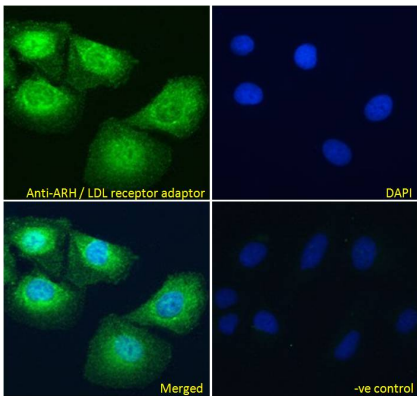
### Properties

Form	Liquid
Purification	Purified from goat serum by antigen affinity chromatography.
Buffer	Tris saline (pH 7.3), 0.02% Sodium azide and 0.5% BSA.
Preservative	0.02% Sodium azide
Stabilizer	0.5% BSA
Concentration	0.5 mg/ml
Storage instruction	For continuous use, store undiluted antibody at 2-8°C for up to a week. For long-term storage, aliquot and store at -20°C or below. Storage in frost free freezers is not recommended. Avoid repeated freeze/thaw cycles. Suggest spin the vial prior to opening. The antibody solution should be gently mixed before use.
Note	For laboratory research only, not for drug, diagnostic or other use.

Bioinformation

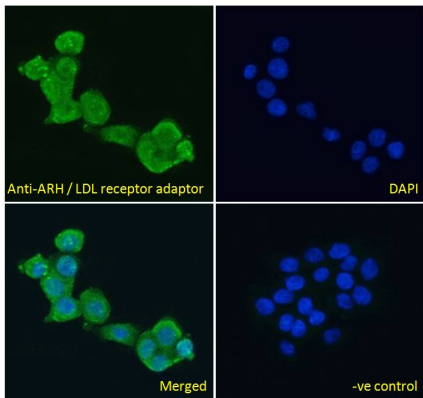
Database links	<a href="#">GeneID: 26119 Human</a> <a href="#">Swiss-port # Q5SW96 Human</a>
Background	The protein encoded by this gene is a cytosolic protein which contains a phosphotyrosine binding (PTD) domain. The PTD domain has been found to interact with the cytoplasmic tail of the LDL receptor. Mutations in this gene lead to LDL receptor malfunction and cause the disorder autosomal recessive hypercholesterolaemia. [provided by RefSeq, Jul 2008]
Research Area	Cell Biology and Cellular Response antibody; Metabolism antibody; Signaling Transduction antibody
Calculated Mw	34 kDa

Images



ARG63337 anti-ARH / LDL Receptor adaptor antibody ICC/IF image

Immunofluorescence: Paraformaldehyde fixed U2OS cells permeabilized with 0.15% Triton. Cells were stained with ARG63337 anti-ARH / LDL Receptor adaptor antibody (green) at 10 µg/ml dilution for 1 hour. DAPI (blue) for nuclear staining. Negative control: Unimmunized goat IgG (green) at 10 µg/ml dilution.



ARG63337 anti-ARH / LDL Receptor adaptor antibody ICC/IF image

Immunofluorescence: Paraformaldehyde fixed A431 cells permeabilized with 0.15% Triton. Cells were stained with ARG63337 anti-ARH / LDL Receptor adaptor antibody (green) at 10 µg/ml dilution for 1 hour. DAPI (blue) for nuclear staining. Negative control: Unimmunized goat IgG (green) at 10 µg/ml dilution.