

ARG63305
anti-CARD6 antibodyPackage: 100 µg
Store at: -20°C

Summary

Product Description	Goat Polyclonal antibody recognizes CARD6
Tested Reactivity	Hu
Tested Application	IHC-P
Host	Goat
Clonality	Polyclonal
Isotype	IgG
Target Name	CARD6
Species	Human
Immunogen	ATESTPSEIIERER-C
Conjugation	Un-conjugated
Alternate Names	Caspase recruitment domain-containing protein 6; CINCIN1

Application Instructions

Application table	Application	Dilution
	IHC-P	5 - 10 µg/ml
Application Note	IHC-P: Antigen Retrieval: Steam tissue section in Citrate buffer (pH 6.0). * The dilutions indicate recommended starting dilutions and the optimal dilutions or concentrations should be determined by the scientist.	

Properties

Form	Liquid
Purification	Purified from goat serum by antigen affinity chromatography.
Buffer	Tris saline (pH 7.3), 0.02% Sodium azide and 0.5% BSA.
Preservative	0.02% Sodium azide
Stabilizer	0.5% BSA
Concentration	0.5 mg/ml
Storage instruction	For continuous use, store undiluted antibody at 2-8°C for up to a week. For long-term storage, aliquot and store at -20°C or below. Storage in frost free freezers is not recommended. Avoid repeated freeze/thaw cycles. Suggest spin the vial prior to opening. The antibody solution should be gently mixed before use.
Note	For laboratory research only, not for drug, diagnostic or other use.

Bioinformation

Database links

[GeneID: 84674 Human](#)

[Swiss-port # Q9BX69 Human](#)

Background

This gene encodes a protein that contains a caspase recruitment domain (CARD), an antiparallel six-helical bundle that mediates homotypic protein-protein interactions. The encoded protein is a microtubule-associated protein that has been shown to interact with receptor-interacting protein kinases and positively modulate signal transduction pathways converging on activation of the inducible transcription factor NF- κ B. [provided by RefSeq, Jul 2008]

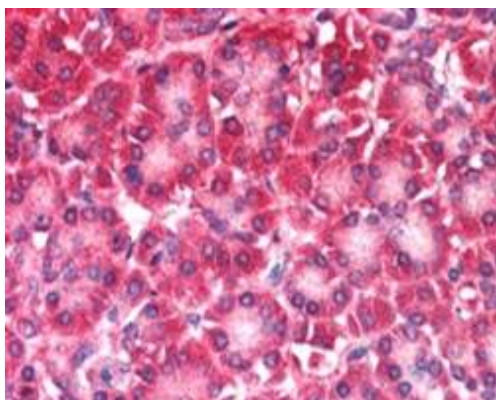
Research Area

Cell Biology and Cellular Response antibody; Cell Death antibody

Calculated Mw

116 kDa

Images



ARG63305 anti-CARD6 antibody IHC-P image

Immunohistochemistry: paraffin embedded Human Pancreas. (Steamed antigen retrieval with citrate buffer pH 6) stained with ARG63305 anti-CARD6 antibody at 5 μ g/ml dilution followed by AP-staining.