

## ARG63298 anti-ALMS1 antibody

Package: 100 µg  
Store at: -20°C

### Summary

Product Description	Goat Polyclonal antibody recognizes ALMS1
Tested Reactivity	Hu
Predict Reactivity	Ms, Rat, Cow, Dog
Tested Application	IHC-P
Specificity	The C terminus of ALMS1 shares an 8 amino acid stretch with two other human proteins: hypothetical protein (XP_169104) and ERAL1 (NP_005693). However, this stretch is located internally in these two proteins and so will most likely not cross-react with this antibody. The N terminus was not chosen as the peptide is expected to cyclise during synthesis.
Host	Goat
Clonality	Polyclonal
Isotype	IgG
Target Name	ALMS1
Species	Human
Immunogen	C-RVTNQLLGRKVPWD
Conjugation	Un-conjugated
Alternate Names	Alstrom syndrome protein 1; ALSS

### Application Instructions

Application table	Application	Dilution
	IHC-P	1 - 3 µg/ml
Application Note	IHC-P: Antigen Retrieval: Microwaved tissue section in Tris/EDTA buffer (pH 9.0). * The dilutions indicate recommended starting dilutions and the optimal dilutions or concentrations should be determined by the scientist.	

### Properties

Form	Liquid
Purification	Purified from goat serum by antigen affinity chromatography.
Buffer	Tris saline (pH 7.3), 0.02% Sodium azide and 0.5% BSA.
Preservative	0.02% Sodium azide
Stabilizer	0.5% BSA
Concentration	0.5 mg/ml
Storage instruction	For continuous use, store undiluted antibody at 2-8°C for up to a week. For long-term storage, aliquot and store at -20°C or below. Storage in frost free freezers is not recommended. Avoid repeated

freeze/thaw cycles. Suggest spin the vial prior to opening. The antibody solution should be gently mixed before use.

Note

For laboratory research only, not for drug, diagnostic or other use.

## Bioinformation

---

Database links

[GeneID: 7840 Human](#)

[Swiss-port # Q8TCU4 Human](#)

Background

This gene encodes a protein containing a large tandem-repeat domain. The mouse ortholog of this gene has been shown to function in ciliogenesis in inner medullary collecting duct cells. Mutations in this gene have been associated with Alstrom syndrome. Alternative splice variants have been described but their full length sequences have not been determined.[provided by RefSeq, Mar 2009]

Research Area

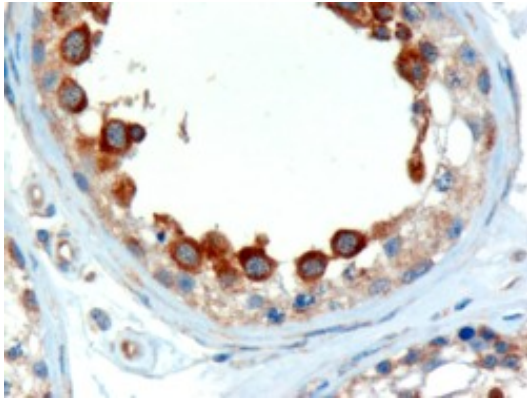
Gene Regulation antibody; Immune System antibody

Calculated Mw

461 kDa

## Images

---



ARG63298 anti-ALMS1 antibody IHC-P image

Immunohistochemistry: paraffin embedded Human Testis. (Microwaved antigen retrieval with Tris/EDTA buffer pH9) stained with ARG63298 anti-ALMS1 antibody at 2 µg/ml dilution followed by HRP-staining.