

## ARG63289 anti-SSP29 / ANP32B antibody

Package: 100 µg  
Store at: -20°C

### Summary

Product Description	Goat Polyclonal antibody recognizes SSP29 / ANP32B
Tested Reactivity	Hu, Ms, Rat, Pig
Predict Reactivity	Cow, Dog
Tested Application	IHC-P, WB
Specificity	This antibody does NOT recognize theTNF family member also known as APRIL - Gene ID number 8741. However this antibody may cross-react with ANP32A (GeneID 8125).
Host	Goat
Clonality	Polyclonal
Isotype	IgG
Target Name	SSP29 / ANP32B
Species	Human
Immunogen	C-KRKRETDDEGEDD
Conjugation	Un-conjugated
Alternate Names	Silver-stainable protein SSP29; PHAPI2; APRIL; SSP29; Acidic protein rich in leucines; Acidic leucine-rich nuclear phosphoprotein 32 family member B; Putative HLA-DR-associated protein I-2

### Application Instructions

Application table	Application	Dilution
	IHC-P	3 - 5 µg/ml
	WB	0.1 - 0.3 µg/ml
Application Note	IHC-P: Antigen Retrieval: Steam tissue section in Citrate buffer (pH 6.0). WB: Recommend incubate at RT for 1h. * The dilutions indicate recommended starting dilutions and the optimal dilutions or concentrations should be determined by the scientist.	

### Properties

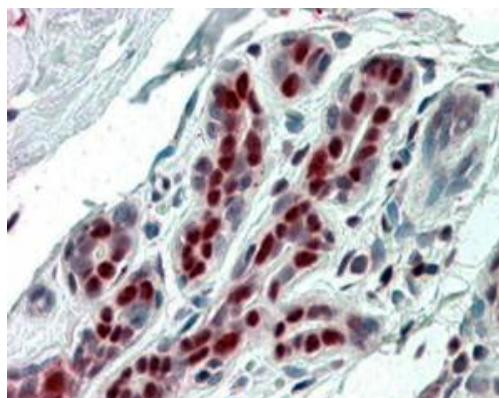
Form	Liquid
Purification	Purified from goat serum by antigen affinity chromatography.
Buffer	Tris saline (pH 7.3), 0.02% Sodium azide and 0.5% BSA.
Preservative	0.02% Sodium azide
Stabilizer	0.5% BSA
Concentration	0.5 mg/ml

Storage instruction	For continuous use, store undiluted antibody at 2-8°C for up to a week. For long-term storage, aliquot and store at -20°C or below. Storage in frost free freezers is not recommended. Avoid repeated freeze/thaw cycles. Suggest spin the vial prior to opening. The antibody solution should be gently mixed before use.
Note	For laboratory research only, not for drug, diagnostic or other use.

## Bioinformation

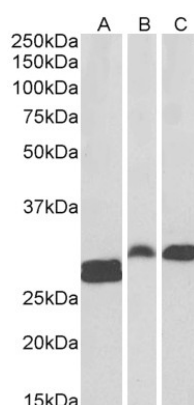
Gene Symbol	ANP32B
Gene Full Name	acidic (leucine-rich) nuclear phosphoprotein 32 family, member B
Function	Multifunctional protein working as a cell cycle progression factor as well as a cell survival factor. Required for the progression from the G1 to the S phase. Anti-apoptotic protein which functions as a caspase-3 inhibitor. Has no phosphatase 2A (PP2A) inhibitor activity (By similarity). Exhibits histone chaperone properties, stimulating core histones to assemble into a nucleosome. [UniProt]
Research Area	Cell Biology and Cellular Response antibody; Cell Death antibody
Calculated Mw	29 kDa
PTM	Some glutamate residues are glycyalted by TTL8. This modification occurs exclusively on glutamate residues and results in a glycine chain on the gamma-carboxyl group (By similarity).

## Images



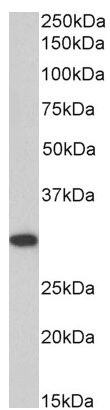
ARG63289 anti-SSP29 / ANP32B antibody IHC-P image

Immunohistochemistry: paraffin embedded Human Breast. (Steamed antigen retrieval with citrate buffer pH 6) stained with ARG63289 anti-SSP29 / ANP32B antibody at 3.8 µg/ml dilution followed by AP-staining.



ARG63289 anti-SSP29 / ANP32B antibody WB image

Western blot: 35 µg of Human tonsil (A), Rat spleen (B) and Pig spleen (C) lysates (in RIPA buffer) stained with ARG63289 anti-SSP29 / ANP32B antibody at 0.1 µg/ml dilution and incubated at RT for 1 hour.



#### ARG63289 anti-SSP29 / ANP32B antibody WB image

Western blot: 35 µg of NIH/3T3 cell lysate (in RIPA buffer) stained with ARG63289 anti-SSP29 / ANP32B antibody at 0.1 µg/ml dilution and incubated at RT for 1 hour.