

## ARG63175 anti-GRB2 antibody

Package: 100 µg  
Store at: -20°C

### Summary

Product Description	Goat Polyclonal antibody recognizes GRB2
Tested Reactivity	Hu, Ms, Rat, Pig
Predict Reactivity	Cow, Dog
Tested Application	IHC-P, WB
Specificity	This antibody is expected to recognize both reported isoforms (NP_002077.1 and NP_987102.1).
Host	Goat
Clonality	Polyclonal
Isotype	IgG
Target Name	GRB2
Species	Human
Immunogen	C-PRNYVTPVNRNV
Conjugation	Un-conjugated
Alternate Names	SH2/SH3 adapter GRB2; EGFRBP-GRB2; Adapter protein GRB2; MST084; MSTP084; Grb3-3; ASH; Growth factor receptor-bound protein 2; NCKAP2; Protein Ash

### Application Instructions

Application table	Application	Dilution
	IHC-P	1 - 2 µg/ml
	WB	0.05 - 0.15 µg/ml
Application Note	WB: Recommend incubate at RT for 1h. IHC-P: Antigen Retrieval: Microwaved tissue section in Citrate buffer (pH 6.0). * The dilutions indicate recommended starting dilutions and the optimal dilutions or concentrations should be determined by the scientist.	

### Properties

Form	Liquid
Purification	Purified from goat serum by antigen affinity chromatography.
Buffer	Tris saline (pH 7.3), 0.02% Sodium azide and 0.5% BSA.
Preservative	0.02% Sodium azide
Stabilizer	0.5% BSA
Concentration	0.5 mg/ml
Storage instruction	For continuous use, store undiluted antibody at 2-8°C for up to a week. For long-term storage, aliquot and store at -20°C or below. Storage in frost free freezers is not recommended. Avoid repeated

freeze/thaw cycles. Suggest spin the vial prior to opening. The antibody solution should be gently mixed before use.

#### Note

For laboratory research only, not for drug, diagnostic or other use.

## Bioinformation

### Background

The protein encoded by this gene binds the epidermal growth factor receptor and contains one SH2 domain and two SH3 domains. Its two SH3 domains direct complex formation with proline-rich regions of other proteins, and its SH2 domain binds tyrosine phosphorylated sequences. This gene is similar to the Sem5 gene of *C.elegans*, which is involved in the signal transduction pathway. Two alternatively spliced transcript variants encoding different isoforms have been found for this gene. [provided by RefSeq, Jul 2008]

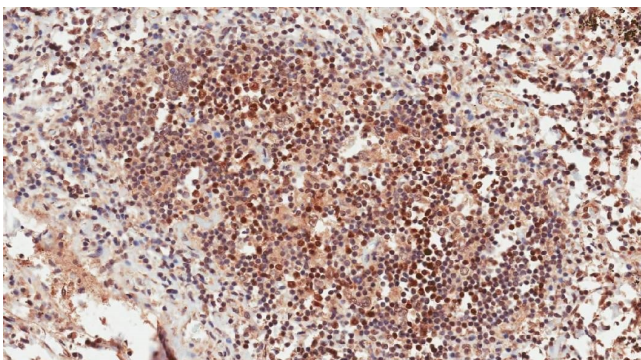
### Research Area

Cancer antibody; Signaling Transduction antibody

### Calculated Mw

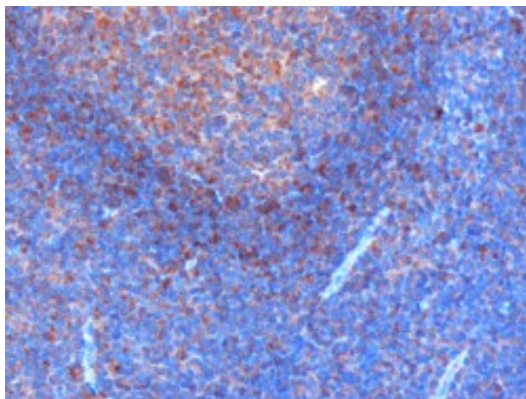
25 kDa

## Images



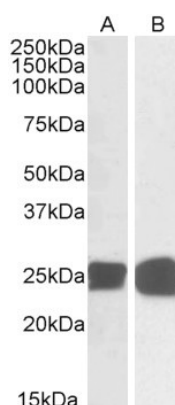
ARG63175 anti-GRB2 antibody IHC-P image

Immunohistochemistry: Paraffin-embedded Human lymph node tissue. Antigen Retrieval: Microwaved tissue section in Citrate buffer (pH 6.0). The tissue section was stained with ARG63175 anti-GRB2 antibody at 1 µg/ml dilution followed by HRP-staining.



ARG63175 anti-GRB2 antibody IHC-P image

Immunohistochemistry: paraffin embedded Human Tonsil. (Microwaved antigen retrieval with citrate buffer pH6) stained with ARG63175 anti-GRB2 antibody at 0.3 µg/ml dilution followed by HRP-staining.



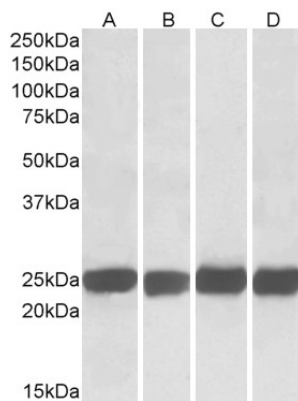
ARG63175 anti-GRB2 antibody WB image

Western blot: 35 µg of Human thymus (A) and MOLT-4 cell (B) lysates (in RIPA buffer) stained with ARG63175 anti-GRB2 antibody at 0.05 µg/ml dilution and incubated at RT for 1 hour.



#### ARG63175 anti-GRB2 antibody WB image

Western blot: 35 µg of Human (A) and Pig (B) spleen lysates (in RIPA buffer) stained with ARG63175 anti-GRB2 antibody at 0.03 µg/ml dilution and incubated at RT for 1 hour.



#### ARG63175 anti-GRB2 antibody WB image

Western blot: 35 µg of Mouse brain (A), Rat brain (B), Mouse spleen (C) and Rat spleen (D) lysates (in RIPA buffer) stained with ARG63175 anti-GRB2 antibody at 0.05 µg/ml dilution and incubated at RT for 1 hour.