

ARG63169 anti-SEC61A1 antibody

Package: 100 µg
Store at: -20°C

Summary

Product Description	Goat Polyclonal antibody recognizes SEC61A1
Tested Reactivity	Hu
Predict Reactivity	Cow, Dog, Pig
Tested Application	IHC-P, WB
Host	Goat
Clonality	Polyclonal
Isotype	IgG
Target Name	SEC61A1
Species	Human
Immunogen	C-KEQSEVGSMSGALLF
Conjugation	Un-conjugated
Alternate Names	Sec61 alpha-1; Protein transport protein Sec61 subunit alpha isoform 1; SEC61; HSEC61; SEC61A

Application Instructions

Application table	Application	Dilution
	IHC-P	Assay - dependent
	WB	0.3 - 1 µg/ml
Application Note	WB: Recommend incubate at RT for 1h. IHC-P: Antigen Retrieval: Steam tissue section in Citrate buffer (pH 6.0). * The dilutions indicate recommended starting dilutions and the optimal dilutions or concentrations should be determined by the scientist.	

Properties

Form	Liquid
Purification	Purified from goat serum by antigen affinity chromatography.
Buffer	Tris saline (pH 7.3), 0.02% Sodium azide and 0.5% BSA.
Preservative	0.02% Sodium azide
Stabilizer	0.5% BSA
Concentration	0.5 mg/ml
Storage instruction	For continuous use, store undiluted antibody at 2-8°C for up to a week. For long-term storage, aliquot and store at -20°C or below. Storage in frost free freezers is not recommended. Avoid repeated freeze/thaw cycles. Suggest spin the vial prior to opening. The antibody solution should be gently mixed before use.

Note

For laboratory research only, not for drug, diagnostic or other use.

Bioinformation

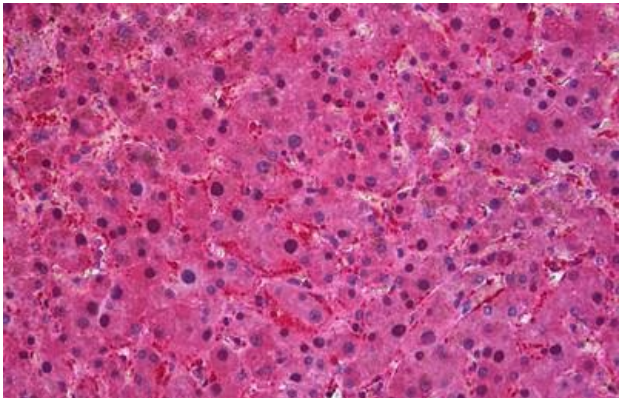
Database links	GeneID: 29927 Human Swiss-port # P61619 Human
Background	The protein encoded by this gene belongs to the SECY/SEC61- alpha family. It appears to play a crucial role in the insertion of secretory and membrane polypeptides into the endoplasmic reticulum. This protein found to be tightly associated with membrane-bound ribosomes, either directly or through adaptor proteins. This gene encodes an alpha subunit of the heteromeric SEC61 complex, which also contains beta and gamma subunits. [provided by RefSeq, Jul 2008]
Research Area	Signaling Transduction antibody
Calculated Mw	52 kDa

Images



ARG63169 anti-SEC61A1 antibody WB image

Western Blot: Human Brain (Cerebellum) lysate (35 µg protein in RIPA buffer) stained with ARG63169 anti-SEC61A1 antibody at 0.3 µg/ml dilution.



ARG63169 anti-SEC61A1 antibody IHC-P image

Immunohistochemistry: Paraffin-embedded Human liver tissue. Antigen Retrieval: Steam tissue section in Citrate buffer (pH 6.0). The tissue section was stained with ARG63169 anti-SEC61A1 antibody at 3.75 µg/ml dilution followed by AP-staining.