

ARG63142 anti-ZCCHC11 / PAPD3 antibody

Package: 100 µg
Store at: -20°C

Summary

Product Description	Goat Polyclonal antibody recognizes ZCCHC11 / PAPD3
Tested Reactivity	Hu
Predict Reactivity	Ms, Rat, Cow, Dog
Tested Application	IHC-P
Specificity	This antibody is expected to recognize all 3 reported isoforms (as represented by NP_001009881.1; NP_056084.1; NP_001009882.1)
Host	Goat
Clonality	Polyclonal
Isotype	IgG
Target Name	ZCCHC11 / PAPD3
Species	Human
Immunogen	RERCPHPPRGNVSE
Conjugation	Un-conjugated
Alternate Names	EC 2.7.7.52; Terminal uridylyltransferase 4; PAPD3; Zinc finger CCHC domain-containing protein 11; TUTase 4; TUT4

Application Instructions

Application table	Application	Dilution
	IHC-P	2 - 6 µg/ml
Application Note	IHC-P: Antigen Retrieval: Steam tissue section in Citrate buffer (pH 6.0). * The dilutions indicate recommended starting dilutions and the optimal dilutions or concentrations should be determined by the scientist.	

Properties

Form	Liquid
Purification	Purified from goat serum by antigen affinity chromatography.
Buffer	Tris saline (pH 7.3), 0.02% Sodium azide and 0.5% BSA.
Preservative	0.02% Sodium azide
Stabilizer	0.5% BSA
Concentration	0.5 mg/ml
Storage instruction	For continuous use, store undiluted antibody at 2-8°C for up to a week. For long-term storage, aliquot and store at -20°C or below. Storage in frost free freezers is not recommended. Avoid repeated freeze/thaw cycles. Suggest spin the vial prior to opening. The antibody solution should be gently mixed

before use.

Note

For laboratory research only, not for drug, diagnostic or other use.

Bioinformation

Database links

[GeneID: 23318 Human](#)

[Swiss-port # Q5TAX3 Human](#)

Background

ZCCHC11 is an RNA uridylyltransferase (EC 2.7.7.52) that uses UTP to add uridines to the 3-prime end of substrate RNA molecules (Jones et al., 2009 [PubMed 19701194]).[supplied by OMIM, Jan 2011]

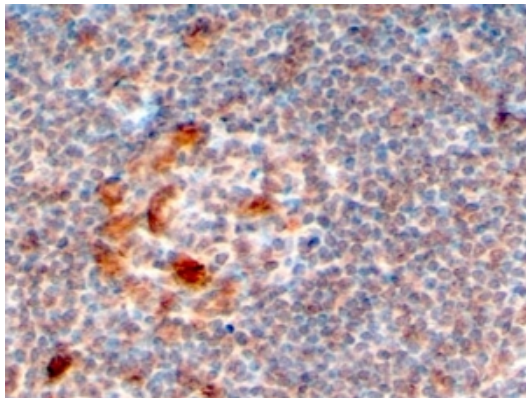
Research Area

Gene Regulation antibody

Calculated Mw

185 kDa

Images



ARG63142 anti-ZCCHC11 / PAPD3 antibody IHC-P image

Immunohistochemistry: paraffin embedded Human Lymph Node. (Steamed antigen retrieval with citrate buffer pH 6) stained with ARG63142 anti-ZCCHC11 / PAPD3 antibody at 4 µg/ml dilution followed by HRP-staining.