

ARG63136 anti-ITK antibody

Package: 100 µg
Store at: -20°C

Summary

Product Description	Goat Polyclonal antibody recognizes ITK
Tested Reactivity	Hu
Predict Reactivity	Ms
Tested Application	FACS, ICC/IF, WB
Host	Goat
Clonality	Polyclonal
Isotype	IgG
Target Name	ITK
Species	Human
Immunogen	C-RLLRQLAEIAESGL
Conjugation	Un-conjugated
Alternate Names	LPFS1; Interleukin-2-inducible T-cell kinase; T-cell-specific kinase; Tyrosine-protein kinase ITK/TSK; PSCTK2; EMT; Kinase EMT; Tyrosine-protein kinase Lyk; LYK; IL-2-inducible T-cell kinase; EC 2.7.10.2

Application Instructions

Application table	Application	Dilution
	FACS	10 µg/ml
	ICC/IF	10 µg/ml
	WB	1 - 3 µg/ml
Application Note	WB: Recommend incubate at RT for 1h. * The dilutions indicate recommended starting dilutions and the optimal dilutions or concentrations should be determined by the scientist.	

Properties

Form	Liquid
Purification	Purified from goat serum by antigen affinity chromatography.
Buffer	Tris saline (pH 7.3), 0.02% Sodium azide and 0.5% BSA.
Preservative	0.02% Sodium azide
Stabilizer	0.5% BSA
Concentration	0.5 mg/ml
Storage instruction	For continuous use, store undiluted antibody at 2-8°C for up to a week. For long-term storage, aliquot and store at -20°C or below. Storage in frost free freezers is not recommended. Avoid repeated freeze/thaw cycles. Suggest spin the vial prior to opening. The antibody solution should be gently mixed

before use.

Note

For laboratory research only, not for drug, diagnostic or other use.

Bioinformation

Database links

[GeneID: 3702 Human](#)

[Swiss-port # Q08881 Human](#)

Background

This gene encodes an intracellular tyrosine kinase expressed in T-cells. The protein contains both SH2 and SH3 domains which are often found in intracellular kinases. It is thought to play a role in T-cell proliferation and differentiation. [provided by RefSeq, Jul 2008]

Research Area

Signaling Transduction antibody

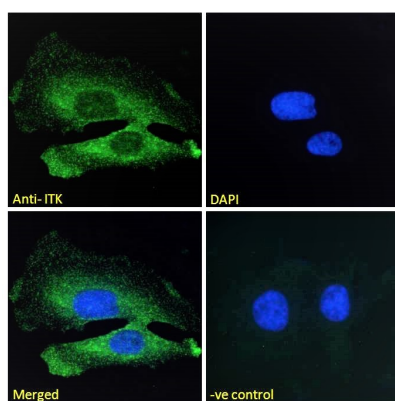
Calculated Mw

72 kDa

PTM

Phosphorylated at Tyr-512 in the activation loop of the kinase domain by LCK. Subsequent autophosphorylation at Tyr-180 leads to the kinase activation. The autophosphorylated Tyr-180 lies within the substrate binding sequence of the SH3 domain.
Ubiquitinated.

Images



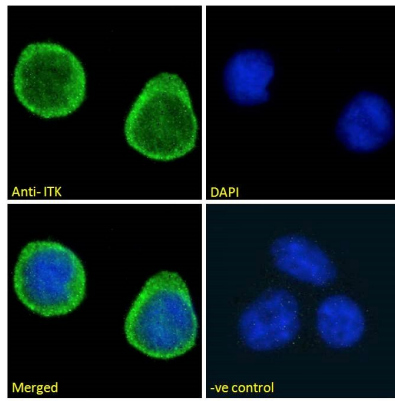
ARG63136 anti-ITK antibody ICC/IF image

Immunofluorescence: Paraformaldehyde fixed HeLa cells permeabilized with 0.15% Triton. Cells were stained with ARG63136 anti-ITK antibody (green) at 10 µg/ml dilution for 1 hour. DAPI (blue) for nuclear staining. Negative control: Unimmunized goat IgG (green) at 10 µg/ml dilution.



ARG63136 anti-ITK antibody WB image

Western blot: 35 µg of Jurkat nuclear lysate (A) and Human parathyroid gland (B, negative control) lysate (in RIPA buffer) stained with ARG63136 anti-ITK antibody at 1 µg/ml dilution and incubated at RT for 1 hour.



ARG63136 anti-ITK antibody ICC/IF image

Immunofluorescence: Paraformaldehyde fixed Jurkat cells permeabilized with 0.15% Triton. Cells were stained with ARG63136 anti-ITK antibody (green) at 10 $\mu\text{g/ml}$ dilution for 1 hour. DAPI (blue) for nuclear staining. Negative control: Unimmunized goat IgG (green) at 10 $\mu\text{g/ml}$ dilution.