

## ARG63121 anti-5-bromodeoxyuridine / BrdU antibody [MoBu-1]

Package: 100 µg, 50 µg  
Store at: -20°C

### Summary

Product Description	Mouse Monoclonal antibody [MoBu-1] recognizes 5-bromodeoxyuridine / BrdU
Tested Reactivity	Other
Tested Application	FACS, ICC/IF, IHC-P
Specificity	The clone MoBu-1 reacts specifically with BrdU incorporated into DNA during S-phase of a cell cycle. MoBu-1 is also useful for detecting proliferating cells by flow cytometry or immunofluorescence staining. It reacts also specifically with 5-bromouridine (BrU). The clone does not cross-react to EdU (PMID: 23272138).
Host	Mouse
Clonality	Monoclonal
Clone	MoBu-1
Isotype	IgG1
Target Name	5-bromodeoxyuridine / BrdU
Immunogen	5-bromodeoxyuridine conjugated with hemocyanine.
Conjugation	Un-conjugated

### Application Instructions

Application table	Application	Dilution
	FACS	1 - 2 µg/ml
	ICC/IF	2 µg/ml
	IHC-P	Assay-dependent

**Application Note** \* The dilutions indicate recommended starting dilutions and the optimal dilutions or concentrations should be determined by the scientist.

### Properties

Form	Liquid
Purification	Purified from ascites by protein-A affinity chromatography.
Purity	> 95% (by SDS-PAGE)
Buffer	PBS (pH 7.4) and 15 mM Sodium azide
Preservative	15 mM Sodium azide
Concentration	1 mg/ml
Storage instruction	For continuous use, store undiluted antibody at 2-8°C for up to a week. For long-term storage, aliquot and store at -20°C or below. Storage in frost free freezers is not recommended. Avoid repeated freeze/thaw cycles. Suggest spin the vial prior to opening. The antibody solution should be gently mixed

before use.

Note

For laboratory research only, not for drug, diagnostic or other use.

## Bioinformation

### Background

Bromodeoxyuridine (BrdU) is a thymidine analog which is selectively incorporated into the DNA of proliferating cells to provide a marker for the DNA being replicated. The number of proliferating cells can then be detected in cell lysates, tissue sections or suspensions using an antibody specific for the BrdU.

### Highlight

Related products:

[BrdU antibodies](#); [BrdU Duos / Panels](#); [Anti-Mouse IgG secondary antibodies](#);

Related news:

[Neuronal Development Marker](#)

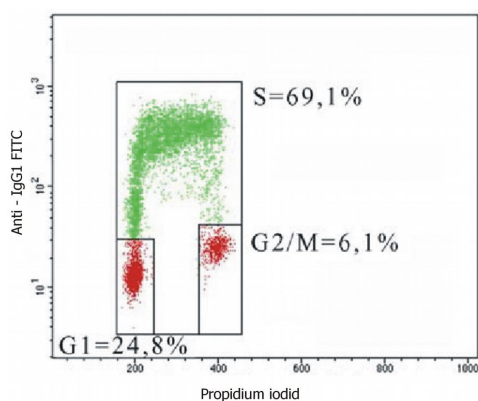
[Choose the Best ZIKA Virus Antibodies](#)

[Fight microcephaly with arigo](#)

### Research Area

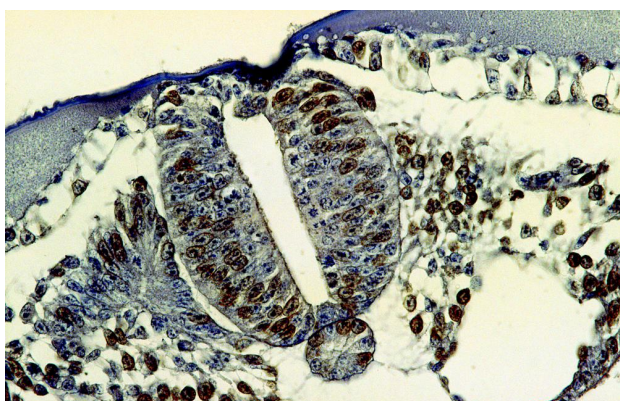
Cell Biology and Cellular Response antibody; Controls and Markers antibody; Gene Regulation antibody; Neuroscience antibody

## Images



ARG63121 anti-5-bromodeoxyuridine / BrdU antibody [MoBu-1]  
FACS image

Flow Cytometry: 5-bromodeoxyuridin (BrdU) incorporated CEM cells stained with ARG63121 anti-5-bromodeoxyuridine / BrdU antibody [MoBu-1], followed by incubation with FITC-labelled secondary antibody.



ARG63121 anti-5-bromodeoxyuridine / BrdU antibody [MoBu-1] IHC-P image

Immunohistochemistry: Bromodeoxyuridine-labeled cells (chick embryo; paraffin-embedded sections) stained with ARG63121 anti-5-bromodeoxyuridine / BrdU antibody [MoBu-1].