

ARG63098 anti-LCP2 / SLP76 antibody

Package: 100 µg
Store at: -20°C

Summary

Product Description	Rabbit Polyclonal antibody recognizes LCP2 / SLP76
Tested Reactivity	Hu
Tested Application	IHC-P, WB
Specificity	The polyclonal antibody reacts with SLP76, a 76kDa cytosolic adaptor protein that is involved in signaling of various hematopoietic cells, such as T cells, mast cells or neutrophils; in B cells, however, it is replaced by SLP65.
Host	Rabbit
Clonality	Polyclonal
Isotype	IgG
Target Name	LCP2 / SLP76
Species	Human
Immunogen	Bacterially expressed fusion protein corresponding to aa. 216-434 of Human SLP76 with histidine tag.
Conjugation	Un-conjugated
Alternate Names	Lymphocyte cytosolic protein 2; SLP-76 tyrosine phosphoprotein; SLP76; SH2 domain-containing leukocyte protein of 76 kDa; SLP-76

Application Instructions

Application table	Application	Dilution
	IHC-P	10 µg/ml
	WB	Assay-dependent
Application Note	<p>WB: Sample preparation: Resuspend approx. 50 mil. cells in 1 ml cold Lysis buffer (1% laurylmaltoside in 20 mM Tris/Cl, 100 mM NaCl pH 8.2, 50 mM NaF including Protease inhibitor Cocktail). Incubate 60 min on ice. Centrifuge to remove cell debris. Mix lysate with reducing Laemmli SDS-PAGE sample buffer. Application note: Reducing condition.</p> <p>* The dilutions indicate recommended starting dilutions and the optimal dilutions or concentrations should be determined by the scientist.</p>	
Positive Control	<p>WB: Jurkat IHC-P: Thymus</p>	

Properties

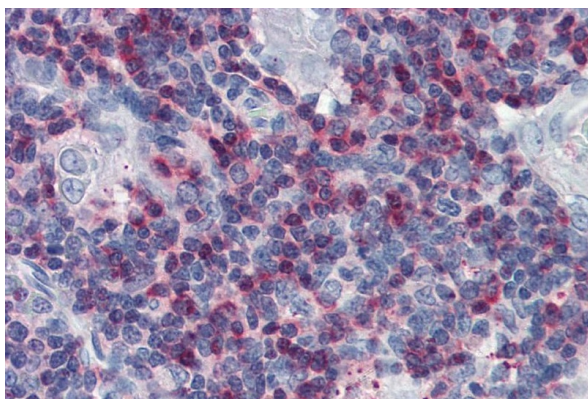
Form	Liquid
Purification	Purified from rabbit serum by precipitation methods.
Purity	> 95% (by SDS-PAGE)
Buffer	PBS (pH 7.4) and 15 mM Sodium azide

Preservative	15 mM Sodium azide
Concentration	1 mg/ml
Storage instruction	For continuous use, store undiluted antibody at 2-8°C for up to a week. For long-term storage, aliquot and store at -20°C or below. Storage in frost free freezers is not recommended. Avoid repeated freeze/thaw cycles. Suggest spin the vial prior to opening. The antibody solution should be gently mixed before use.
Note	For laboratory research only, not for drug, diagnostic or other use.

Bioinformation

Database links	GeneID: 3937 Human Swiss-port # Q13094 Human
Gene Symbol	LCP2
Gene Full Name	lymphocyte cytosolic protein 2 (SH2 domain containing leukocyte protein of 76kDa)
Background	SLP76 (SH2 domain-containing leukocyte protein of 76 kDa) is a cytosolic adaptor protein which translocates to the plasma membrane and is involved in multiple signaling pathways in T cells, mast cells, neutrophils and platelets; B cells express its analog SLP65/BLNK (B cell linker protein). SLP76 is phosphorylated by Syk-family and Tec-family tyrosine kinases and couples them to the phosphorylation and activation of PLC-gamma. Via Gads or Grb2, SLP76 also associates with LAT adaptor by involvement of SLP76 proline-rich region. The SH2 domain of SLP76 has been identified as the region involved in binding the serine/threonine kinase HPK1. HPK1 may act as both a positive and a negative regulator by promoting the Jnk-mitogen activated protein kinase (MAPK) pathway and inhibiting the pathway leading to AP-1 activation.
Function	Involved in T-cell antigen receptor mediated signaling. [UniProt]
Research Area	Signaling Transduction antibody
Calculated Mw	60 kDa
PTM	Phosphorylated after T-cell receptor activation by ZAP70, ITK and TXK, which leads to the up-regulation of Th1 preferred cytokine IL-2. SYK-dependent phosphorylation is required for recruitment of PI3K signaling components.

Images



ARG63098 anti-LCP2 / SLP76 antibody IHC-P image

Immunohistochemistry: Paraffin-embedded Human thymus tissue stained with ARG63098 anti-LCP2 / SLP76 antibody.