

ARG63095 anti-SIT antibody [SIT-01]

Package: 100 µg
Store at: -20°C

Summary

Product Description	Mouse Monoclonal antibody [SIT-01] recognizes SIT
Tested Reactivity	Hu
Tested Application	FACS, IP, WB
Specificity	The clone SIT-01 reacts with SHP2-interacting transmembrane adaptor protein (SIT) expressed exclusively in lymphoid organs. It weakly crossreacts with mouse SIT.
Host	Mouse
Clonality	Monoclonal
Clone	SIT-01
Isotype	IgG1
Target Name	SIT
Species	Human
Immunogen	Bacterially produced recombinant intracellular fragment of human SIT.
Conjugation	Un-conjugated
Alternate Names	gp30/40; Signaling threshold-regulating transmembrane adapter 1; SIT; SHP2-interacting transmembrane adapter protein; SIT-R; Suppression-inducing transmembrane adapter 1

Application Instructions

Application table	Application	Dilution
	FACS	Assay-dependent
	IP	Assay-dependent
	WB	Assay-dependent
Application Note	<p>FACS: Staining technique: Intracellular staining.</p> <p>WB: WB analysis demonstrated that SIT is expressed as an ~ 40 kDa protein that is reduced to ~ 20 kDa by endoglycosidase treatment.</p> <p>* The dilutions indicate recommended starting dilutions and the optimal dilutions or concentrations should be determined by the scientist.</p>	

Properties

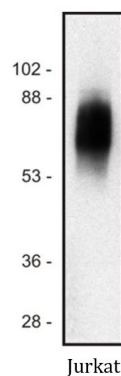
Form	Liquid
Purification	Purified from ascites by protein-A affinity chromatography.
Purity	> 95% (by SDS-PAGE)
Buffer	PBS (pH 7.4) and 15 mM Sodium azide
Preservative	15 mM Sodium azide

Concentration	1 mg/ml
Storage instruction	For continuous use, store undiluted antibody at 2-8°C for up to a week. For long-term storage, aliquot and store at -20°C or below. Storage in frost free freezers is not recommended. Avoid repeated freeze/thaw cycles. Suggest spin the vial prior to opening. The antibody solution should be gently mixed before use.
Note	For laboratory research only, not for drug, diagnostic or other use.

Bioinformation

Database links	GeneID: 27240 Human Swiss-port # Q9Y3P8 Human
Gene Symbol	SIT1
Gene Full Name	signaling threshold regulating transmembrane adaptor 1
Background	SIT (SHP2-interacting transmembrane adaptor protein) is expressed exclusively in lymphoid organs and acts either as a positive or as a negative regulatory element in T cell activation and in T cell development. Binding to Grb2 plays a pivotal role in signal transduction. Hubener et al. (2001) determined that the SIT gene contains 5 exons and spans 1.8 kb of genomic DNA. The SIT promoter demonstrated strong transcriptional activity and potential binding sites for both ubiquitous and lymphoid-specific transcription factors.
Function	Negatively regulates TCR (T-cell antigen receptor)-mediated signaling in T-cells. Involved in positive selection of T-cells. [UniProt]
Research Area	Signaling Transduction antibody
Calculated Mw	21 kDa
PTM	Phosphorylated on tyrosines by LCK, FYN or ZAP70 upon TCR activation; which leads to the recruitment of PTPN11, GRB2 and CSK.

Images



ARG63095 anti-SIT antibody [SIT-01] WB image

Western blot: Jurkat cell lysate (1% lauryl maltoside) (non-reduced sample) stained with ARG63095 anti-SIT antibody [SIT-01].