

ARG63091 anti-PSA antibody [A67-B/E3]

Package: 100 µg
Store at: -20°C

Summary

Product Description	Mouse Monoclonal antibody [A67-B/E3] recognizes PSA
Tested Reactivity	Hu
Tested Application	ELISA, IHC-P, WB
Specificity	The clone A67-B/E3 reacts with prostate-specific antigen (PSA), a protein produced by normal prostate cells. The highest amounts of PSA are found in the seminal fluid.
Host	Mouse
Clonality	Monoclonal
Clone	A67-B/E3
Isotype	IgG1
Target Name	PSA
Species	Human
Immunogen	30 KDa protein fraction prepared from human seminal plasma
Conjugation	Un-conjugated
Alternate Names	Prostate-specific antigen; Gamma-seminoprotein; APS; PSA; EC 3.4.21.77; Kallikrein-3; P-30 antigen; Semenogelase; hK3; Semin; KLK2A1

Application Instructions

Application table	Application	Dilution
	ELISA	Assay-dependent
	IHC-P	10 µg/ml
	WB	2 - 5 µg/ml
Application Note	* The dilutions indicate recommended starting dilutions and the optimal dilutions or concentrations should be determined by the scientist.	
Positive Control	WB: Seminal plasma	

Properties

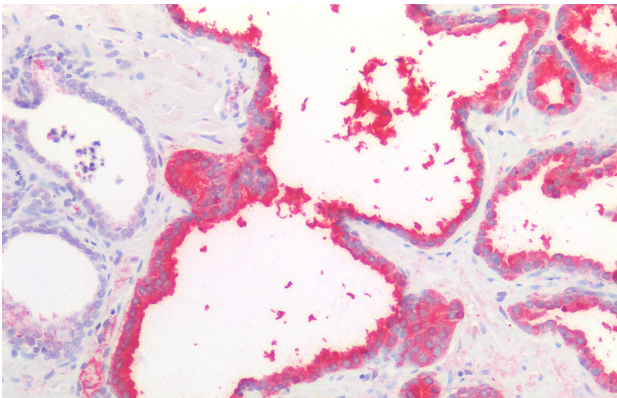
Form	Liquid
Purification	Purified from ascites by precipitation methods.
Purity	> 95% (by SDS-PAGE)
Buffer	PBS (pH 7.4) and 15 mM Sodium azide
Preservative	15 mM Sodium azide

Concentration	1 mg/ml
Storage instruction	For continuous use, store undiluted antibody at 2-8°C for up to a week. For long-term storage, aliquot and store at -20°C or below. Storage in frost free freezers is not recommended. Avoid repeated freeze/thaw cycles. Suggest spin the vial prior to opening. The antibody solution should be gently mixed before use.
Note	For laboratory research only, not for drug, diagnostic or other use.

Bioinformation

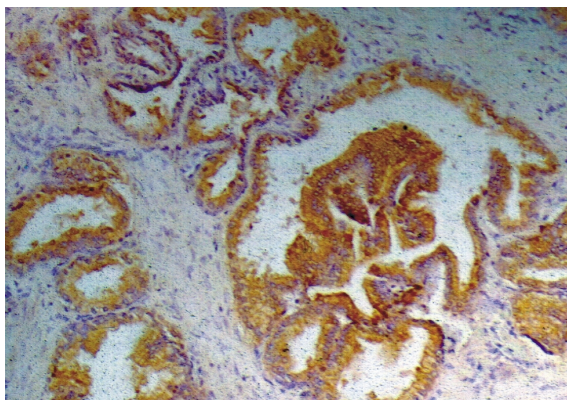
Database links	GeneID: 354 Human Swiss-port # P07288 Human
Gene Symbol	KLK3
Gene Full Name	kallikrein-related peptidase 3
Background	Prostate-specific antigen (PSA) is a protein produced by normal prostate cells. This enzyme participates in the dissolution of the seminal fluid coagulum and plays an important role in fertility. The highest amounts of PSA are found in the seminal fluid; some PSA escapes the prostate and can be found in the serum. This serum component has been used to track the response to therapy in men with prostate cancer. ISOBM TD-3 PSA Workshop code: 207
Function	Hydrolyzes semenogelin-1 thus leading to the liquefaction of the seminal coagulum. [UniProt]
Research Area	Cancer antibody; Controls and Markers antibody; Neuroscience antibody; Signaling Transduction antibody
Calculated Mw	29 kDa

Images



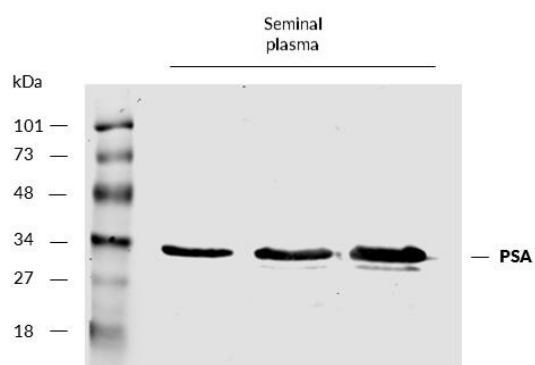
ARG63091 anti-PSA antibody [A67-B/E3] IHC-P image

Immunohistochemistry: Paraffin-embedded Human prostate tissue stained with ARG63091 anti-PSA antibody [A67-B/E3] at 10 µg/ml dilution.



ARG63091 anti-PSA antibody [A67-B/E3] IHC-P image

Immunohistochemistry: Prostate paraffin section stained with ARG63091 anti-PSA antibody [A67-B/E3].



ARG63091 anti-PSA antibody [A67-B/E3] WB image

Western blot: Human seminal plasma stained with ARG63091 anti-PSA antibody [A67-B/E3] at 5 µg/ml dilution, under reducing condition.