

ARG63038 Mouse anti-Bovine IgG (Light Chain) antibody [IVA285-1]

Package: 100 µg
Store at: -20°C

Summary

Product Description	Mouse Monoclonal antibody [IVA285-1] recognizes Bovine IgG (Light Chain)
Tested Reactivity	Bov
Tested Application	FACS, IHC-Fr, WB
Specificity	The clone IVA285-1 reacts with bovine IgG (light chains). IgG light chains (kappa nad lambda types) consist of a variable region and a constant region and can easily be differentiated by the antigenic properties of the constant region.
Host	Mouse
Clonality	Monoclonal
Clone	IVA285-1
Isotype	IgG1
Target Name	IgG (Light Chain)
Immunogen	Fraction of Bovine immunoglobulin.
Conjugation	Un-conjugated

Application Instructions

Application table	Application	Dilution
	FACS	1 - 4 µg/ml
	IHC-Fr	Assay-dependent
	WB	0.5 - 1 µg/ml
Application Note	WB: Incubation: Overnight at 4°C. Sample preparation: Bovine serum, dilution 1:50 in Laemmli reducing buffer, boiled in water bath for 3 min. Application notes: Strongly reacts with bovine IgG light chains, weakly reacts with IgM. Under reducing condition. SDS-PAGE (12% separating gel). * The dilutions indicate recommended starting dilutions and the optimal dilutions or concentrations should be determined by the scientist.	
Positive Control	WB: Bovine serum	

Properties

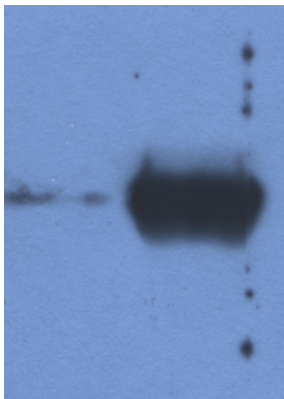
Form	Liquid
Purification	Purified from ascites by protein-A affinity chromatography.
Purity	> 95% (by SDS-PAGE)
Buffer	PBS (pH 7.4) and 15 mM Sodium azide
Preservative	15 mM Sodium azide
Concentration	1 mg/ml

Storage instruction	For continuous use, store undiluted antibody at 2-8°C for up to a week. For long-term storage, aliquot and store at -20°C or below. Storage in frost free freezers is not recommended. Avoid repeated freeze/thaw cycles. Suggest spin the vial prior to opening. The antibody solution should be gently mixed before use.
Note	For laboratory research only, not for drug, diagnostic or other use.

Bioinformation

Research Area	Immune System antibody
---------------	------------------------

Images



ARG63038 Mouse anti-Bovine IgG (Light Chain) antibody [IVA285-1]
WB image

Western blot: 1) Fetal calf serum, and 2) Bovine serum stained with ARG63038 Mouse anti-Bovine IgG (Light Chain) antibody [IVA285-1].