

ARG63036 Mouse anti-Human IgG (Fc) antibody [EM-07] (FITC)

Package: 100 µg

Store at: 4°C

Summary

Product Description	FITC-conjugated Mouse Monoclonal antibody [EM-07] recognizes Human IgG
Tested Reactivity	Hu
Tested Application	FACS, ICC/IF
Host	Mouse
Clonality	Monoclonal
Clone	EM-07
Isotype	IgG1
Target Name	IgG (Fc)
Species	Human
Immunogen	Fusion protein of human IgG Fc fragment.
Target Ig	Human IgG
Conjugation	FITC

Application Instructions

Application table	Application	Dilution
	FACS	1 - 4 µg/ml
	ICC/IF	2 - 5 µg/ml
Application Note	* The dilutions indicate recommended starting dilutions and the optimal dilutions or concentrations should be determined by the scientist.	

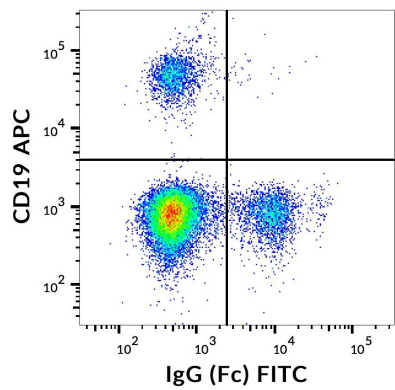
Properties

Form	Liquid
Purification Note	The purified antibody is conjugated with Fluorescein isothiocyanate (FITC) under optimum conditions. The reagent is free of unconjugated FITC.
Buffer	PBS, 15 mM Sodium azide and 0.2% (w/v) high-grade protease free BSA
Preservative	15 mM Sodium azide
Stabilizer	0.2% (w/v) high-grade protease free BSA
Concentration	0.1 mg/ml
Storage instruction	Aliquot and store in the dark at 2-8°C. Keep protected from prolonged exposure to light. Avoid repeated freeze/thaw cycles. Suggest spin the vial prior to opening. The antibody solution should be gently mixed before use.
Note	For laboratory research only, not for drug, diagnostic or other use.

Bioinformation

Gene Symbol	IGHG1
Gene Full Name	immunoglobulin heavy constant gamma 1 (G1m marker)
Research Area	Controls and Markers antibody; Gene Regulation antibody; Immune System antibody

Images



ARG63036 Mouse anti-Human IgG (Fc) antibody [EM-07] (FITC) FACS image

Flow Cytometry: Human peripheral blood stained with ARG63036 Mouse anti-Human IgG (Fc) antibody [EM-07] (FITC).