

ARG63034
anti-IgE antibody [4H10]

Package: 100 µg

Store at: -20°C

Summary

Product Description	Mouse Monoclonal antibody [4H10] recognizes IgE
Tested Reactivity	Hu
Tested Application	ELISA, FACS
Specificity	The clone 4H10 reacts with human IgE; it recognizes an epitope different from the ones recognized by BE5 and 4G7 antibodies to IgE.
Host	Mouse
Clonality	Monoclonal
Clone	4H10
Isotype	IgG1
Target Name	IgE
Species	Human
Immunogen	Purified human IgE.
Conjugation	Un-conjugated

Application Instructions

Application table	Application	Dilution
	ELISA	Assay-dependent
	FACS	4 µg/ml
Application Note	* The dilutions indicate recommended starting dilutions and the optimal dilutions or concentrations should be determined by the scientist.	

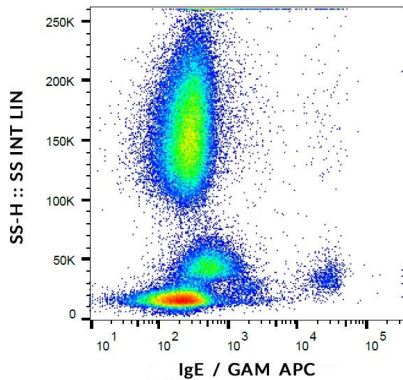
Properties

Form	Liquid
Purification	Purified from ascites by precipitation methods and ion exchange chromatography.
Purity	> 95% (by SDS-PAGE)
Buffer	PBS (pH 7.4) and 15 mM Sodium azide
Preservative	15 mM Sodium azide
Concentration	1 mg/ml
Storage instruction	For continuous use, store undiluted antibody at 2-8°C for up to a week. For long-term storage, aliquot and store at -20°C or below. Storage in frost free freezers is not recommended. Avoid repeated freeze/thaw cycles. Suggest spin the vial prior to opening. The antibody solution should be gently mixed before use.

Bioinformation

Database links	GeneID: 3497 Human
Background	Immunoglobulin E (IgE) is a 180 kDa soluble protein serving as an antigen-specific unit of mast cell effector mechanisms. IgE has the lowest serum concentration of all immunoglobulins (approximately 0.5 mg/l) in healthy individuals, but upon allergen challenge its concentration in blood increases dramatically. Although biological survival of free IgE is very short (T1/2 = 2 days), it is stabilized after binding to its high affinity receptor. Unlike IgM- IgG- and IgA-committed B cells, IgE-switched B cells do not undergo clonal expansion.
Research Area	Immune System antibody

Images



ARG63034 anti-IgE antibody [4H10] FACS image

Flow Cytometry: Human peripheral blood cells stained with ARG63034 anti-IgE antibody [4H10], followed by incubation with APC labelled Goat anti-Mouse secondary antibody.