

ARG63031
anti-Human IgE antibody [BE5] (FITC)

Package: 100 µg

Store at: 4°C

Summary

Product Description	FITC-cojugated Mouse Monoclonal antibody [BE5] recognizes Human IgE
Tested Reactivity	Hu
Tested Application	FACS
Specificity	The clone BE5 reacts with human IgE; it recognizes an epitope different from the ones recognized by 4G7 and 4H10 antibodies to IgE.
Host	Mouse
Clonality	Monoclonal
Clone	BE5
Isotype	IgG1
Target Name	Human IgE
Species	Human
Immunogen	Purified human IgE.
Conjugation	FITC

Application Instructions

Application table	Application	Dilution
	FACS	5 µg/ml
Application Note	* The dilutions indicate recommended starting dilutions and the optimal dilutions or concentrations should be determined by the scientist.	

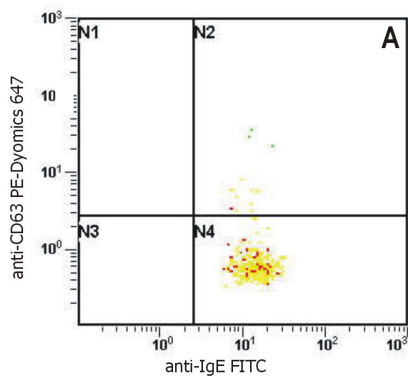
Properties

Form	Liquid
Purification Note	The purified antibody is conjugated with Fluorescein isothiocyanate (FITC) under optimum conditions. The reagent is free of unconjugated FITC.
Buffer	PBS, 15 mM Sodium azide and 0.2% (w/v) high-grade protease free BSA
Preservative	15 mM Sodium azide
Stabilizer	0.2% (w/v) high-grade protease free BSA
Concentration	0.1 mg/ml
Storage instruction	Aliquot and store in the dark at 2-8°C. Keep protected from prolonged exposure to light. Avoid repeated freeze/thaw cycles. Suggest spin the vial prior to opening. The antibody solution should be gently mixed before use.
Note	For laboratory research only, not for drug, diagnostic or other use.

Bioinformation

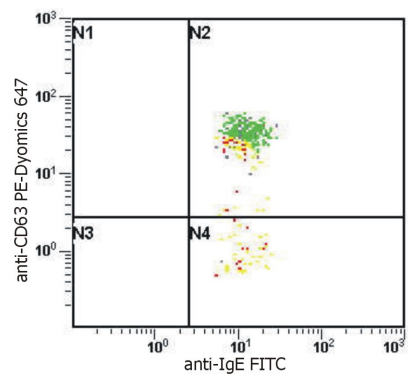
Database links	GeneID: 3497 Human
Background	Immunoglobulin E (IgE) is a 180 kDa soluble protein serving as an antigen-specific unit of mast cell effector mechanisms. IgE has the lowest serum concentration of all immunoglobulins (approximately 0.5 mg/l) in healthy individuals, but upon allergen challenge its concentration in blood increases dramatically. Although biological survival of free IgE is very short (T1/2 = 2 days), it is stabilized after binding to its high affinity receptor. Unlike IgM- IgG- and IgA-committed B cells, IgE-switched B cells do not undergo clonal expansion.
Research Area	Immune System antibody

Images



ARG63031 anti-Human IgE antibody [BE5] (FITC) FACS image

Flow Cytometry: Unstimulated normal (heparin-treated) whole blood stained with ARG63031 anti-Human IgE antibody [BE5] (FITC).



ARG63031 anti-Human IgE antibody [BE5] (FITC) FACS image

Flow Cytometry: Stimulated normal (heparin-treated) whole blood with combination of IL-3 and Goat anti-IgE polyclonal antibody. Staining with ARG63031 anti-Human IgE antibody [BE5] (FITC).