

ARG62909 anti-CD62L / L-Selectin antibody [MEL-14] (FITC)

Package: 100 µg
Store at: 4°C

Summary

Product Description	FITC-conjugated Rat Monoclonal antibody [MEL-14] recognizes CD62L / L-Selectin
Tested Reactivity	Ms
Tested Application	BL, FACS, IHC-Fr
Host	Rat
Clonality	Monoclonal
Clone	MEL-14
Isotype	IgG2a, kappa
Target Name	CD62L / L-Selectin
Species	Mouse
Immunogen	C3H/eb cloned mouse B cell lymphoma 38C-13
Conjugation	FITC
Alternate Names	Leukocyte surface antigen Leu-8; Leukocyte adhesion molecule 1; CD antigen CD62L; PLNHR; LSEL; CD62L; Leukocyte-endothelial cell adhesion molecule 1; L-selectin; LAM1; LNHR; TQ1; CD62 antigen-like family member L; gp90-MEL; Lymph node homing receptor; LYAM1; LECAM1; LEU8; LAM-1

Application Instructions

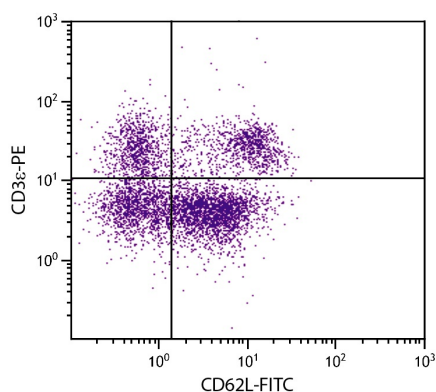
Application table	Application	Dilution
	BL	Assay-dependent
	FACS	< 2 µg/10 ⁶ cells
	IHC-Fr	Assay-dependent
	Application Note	* The dilutions indicate recommended starting dilutions and the optimal dilutions or concentrations should be determined by the scientist.

Properties

Form	Liquid
Buffer	PBS and 0.1% Sodium azide.
Preservative	0.1% Sodium azide
Concentration	0.5 mg/ml
Storage instruction	Aliquot and store in the dark at 2-8°C. Keep protected from prolonged exposure to light. Avoid repeated freeze/thaw cycles. Suggest spin the vial prior to opening. The antibody solution should be gently mixed before use.
Note	For laboratory research only, not for drug, diagnostic or other use.

Database links	GeneID: 20343 Mouse Swiss-port # P18337 Mouse
Gene Symbol	Sell
Gene Full Name	selectin, lymphocyte
Background	CD62L (L-selectin) is an adhesion glycoprotein that is constitutively expressed on the cell surface of leukocytes and mediates their homing to inflammatory sites and peripheral lymph nodes by enabling rolling along the venular wall. CD62L is also involved in activation-induced neutrophil aggregation. Activation-dependent CD62L shedding, however, counteracts neutrophil rolling. CD62L has also signaling roles including enhance of chemokine receptor expression. Similarly to CD62P, the major ligand of CD62L is PSGL-1 (P-selectin glycoprotein ligand-1). _x000D_
Function	Cell surface adhesion protein. Mediates the adherence of lymphocytes to endothelial cells of high endothelial venules in peripheral lymph nodes. Promotes initial tethering and rolling of leukocytes in endothelia (By similarity). [UniProt]
Research Area	Cell Biology and Cellular Response antibody; Developmental Biology antibody; Immune System antibody; Signaling Transduction antibody
Calculated Mw	42 kDa

Images



ARG62909 anti-CD62L / L-Selectin antibody [MEL-14] (FITC) FACS image

Flow Cytometry: BALB/c Mouse splenocytes stained with ARG62909 anti-CD62L / L-Selectin antibody [MEL-14] (FITC) and [ARG20819](#) anti-CD3e antibody [C363.29B] (PE).