

ARG62795 anti-CD28 antibody [CD28.2] (FITC)

Package: 100 tests
Store at: 4°C

Summary

Product Description	FITC-conjugated Mouse Monoclonal antibody [CD28.2] recognizes CD28
Tested Reactivity	Hu, NHuPrm
Tested Application	FACS
Specificity	The clone CD28.2 reacts with CD28, a disulfide-linked homodimeric type I glycoprotein (monomer of Mw 44 kDa) which is a critical costimulatory receptor of T cells. HLDA V.; WS Code 5T CD28.05
Host	Mouse
Clonality	Monoclonal
Clone	CD28.2
Isotype	IgG1
Target Name	CD28
Species	Human
Immunogen	DC28.1.3.3 murine T cell hybridoma transfected with human CD28 cDNA
Conjugation	FITC
Alternate Names	Tp44; TP44; T-cell-specific surface glycoprotein CD28; CD antigen CD28

Application Instructions

Application table	Application	Dilution
	FACS	20 µl / 10 ⁶ cells
Application Note	* The dilutions indicate recommended starting dilutions and the optimal dilutions or concentrations should be determined by the scientist.	

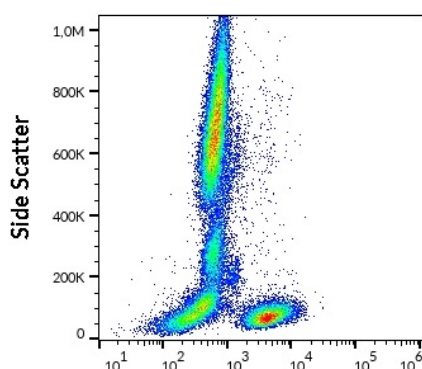
Properties

Form	Liquid
Purification Note	The purified antibody is conjugated with Fluorescein isothiocyanate (FITC) under optimum conditions. The reagent is free of unconjugated FITC and adjusted for direct use. No reconstitution is necessary.
Buffer	PBS, 15 mM Sodium azide and 0.2% (w/v) high-grade protease free BSA
Preservative	15 mM Sodium azide
Stabilizer	0.2% (w/v) high-grade protease free BSA
Storage instruction	Aliquot and store in the dark at 2-8°C. Keep protected from prolonged exposure to light. Avoid repeated freeze/thaw cycles. Suggest spin the vial prior to opening. The antibody solution should be gently mixed before use.
Note	For laboratory research only, not for drug, diagnostic or other use.

Bioinformation

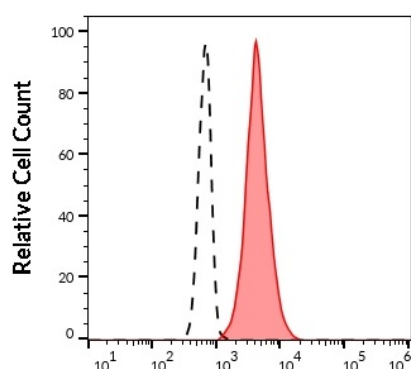
Database links	GeneID: 940 Human Swiss-port # P10747 Human
Gene Symbol	CD28
Gene Full Name	CD28 molecule
Background	CD28 is the critical T cell costimulatory receptor which provides to the cell the important second activation signal by binding CD80 and CD86 that are expressed by antigen presenting cells. Besides its costimulation role CD28 functions in preventing T cells from anergic hyporesponsive state or from undergoing premature apoptotic cell death. CD28 is also expressed on human fetal NK cells and some NK cell lines, whereas on murine NK cells the CD28 expression is much broader.
Function	Involved in T-cell activation, the induction of cell proliferation and cytokine production and promotion of T-cell survival. [UniProt]
Research Area	Developmental Biology antibody; Immune System antibody; Cytotoxic T Cell Surface Study antibody
Calculated Mw	25 kDa
PTM	CD40LG induces tyrosine phosphorylation of isoform 3.

Images



ARG62795 anti-CD28 antibody [CD28.2] (FITC) FACS image

Flow Cytometry: Human peripheral whole blood stained with ARG62795 anti-CD28 antibody [CD28.2] (FITC) (20 µl reagent / 100 µl of peripheral whole blood).



ARG62795 anti-CD28 antibody [CD28.2] (FITC) FACS image

Flow Cytometry: Separation of human CD28 positive lymphocytes (red-filled) from neutrophil granulocytes (black-dashed). Human peripheral whole blood stained with ARG62795 anti-CD28 antibody [CD28.2] (FITC) (20 µl reagent / 100 µl of peripheral whole blood).