

ARG62785 anti-CD25 antibody [MEM-140]

Package: 100 µg
Store at: -20°C

Summary

Product Description	Mouse Monoclonal antibody [MEM-140] recognizes CD25
Tested Reactivity	Hu
Tested Application	FACS, IP
Specificity	The clone MEM-140 reacts with CD25 (Interleukin-2 receptor alpha chain), a 55 kDa type I transmembrane glycoprotein expressed on activated B and T lymphocytes, activated monocytes/macrophages and on CD4 ⁺ T lymphocytes (T regulatory cells); it is lost on resting B and T lymphocytes. HLDA VI; WS Code C C-54
Host	Mouse
Clonality	Monoclonal
Clone	MEM-140
Isotype	IgM
Target Name	CD25
Immunogen	PHA-activated peripheral blood leucocytes
Conjugation	Un-conjugated
Alternate Names	IL-2-RA; IL-2 receptor subunit alpha; CD25; TCGFR; TAC antigen; IL2R; CD antigen CD25; Interleukin-2 receptor subunit alpha; IL-2R subunit alpha; p55; IL2-RA; IDDM10

Application Instructions

Application table	Application	Dilution
	FACS	1 µg/ml
	IP	Assay-dependent
Application Note	IP: Excellent for immunoisolation of CD25+cells. * The dilutions indicate recommended starting dilutions and the optimal dilutions or concentrations should be determined by the scientist.	

Properties

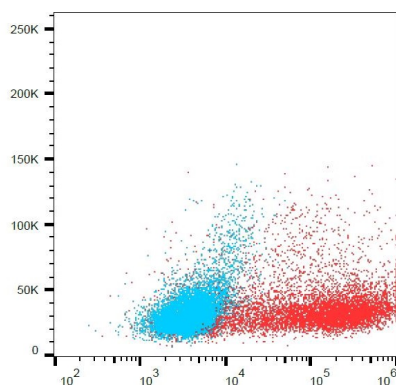
Form	Liquid
Purification	Purified from ascites by thiophilic adsorption-affinity chromatography.
Purity	> 95% (by SDS-PAGE)
Buffer	TBS (pH 8.0) and 15 mM Sodium azide
Preservative	15 mM Sodium azide
Concentration	1 mg/ml

Storage instruction	For continuous use, store undiluted antibody at 2-8°C for up to a week. For long-term storage, aliquot and store at -20°C or below. Storage in frost free freezers is not recommended. Avoid repeated freeze/thaw cycles. Suggest spin the vial prior to opening. The antibody solution should be gently mixed before use.
Note	For laboratory research only, not for drug, diagnostic or other use.

Bioinformation

Database links	GeneID: 3559 Human Swiss-port # P01589 Human
Gene Symbol	IL2RA
Gene Full Name	interleukin 2 receptor, alpha
Background	CD25 (IL2Ralpha, Tac) is a ligand-binding alpha subunit of interleukin 2 receptor (IL2R). Together with beta and gamma subunit CD25 constitutes the high affinity IL2R, whereas CD25 alone serves as the low affinity IL2R. CD25 expression rapidly increases upon T cell activation. The 55 kDa CD25 molecule is enzymatically cleaved and shed from the cell surface as a soluble 45 kDa s-Tac, whose concentration in serum can be used as a marker of T cell activation. Expression of CD25 indicates the neoplastic phenotype of mast cells. Humanized anti CD25 antibodies represent a useful tool to reduce the incidence of allograft rejection as well as the severity of graft versus host reaction, and radioimmunoconjugates of anti-CD25 antibodies can be used against CD25 expressing lymphomas.
Function	Receptor for interleukin-2. [UniProt]
Research Area	Immune System antibody; Pre-B Cell Marker antibody
Calculated Mw	31 kDa

Images



ARG62785 anti-CD25 antibody [MEM-140] FACS image

Flow Cytometry: Unstained (blue) and stained (red) PHA-stimulated human peripheral blood mononuclear cells. Cells were stained with ARG62785 anti-CD25 antibody [MEM-140] at 0.6 µg/ml dilution, followed by APC-conjugated Goat anti-Mouse antibody.