

## ARG62731 anti-CD147 antibody [MEM-M6/1]

Package: 100 µg  
Store at: -20°C

### Summary

Product Description	Mouse Monoclonal antibody [MEM-M6/1] recognizes CD147
Tested Reactivity	Hu
Tested Application	FACS, IHC-P, IP, WB
Specificity	The clone MEM-M6/1 recognizes an epitope in the N-terminal Ig domain (D1) of CD147 (Neurothelin), a 50-60 kDa type I transmembrane glycoprotein primarily expressed on all leukocytes, red blood cells, platelets and endothelial cells; it is not expressed by resting lymphocytes. MEM-M6/1 is a high-affinity antibody capable of binding to unstimulated peripheral blood T cells.
Host	Mouse
Clonality	Monoclonal
Clone	MEM-M6/1
Isotype	IgG1
Target Name	CD147
Species	Human
Immunogen	Protein A-CR purified soluble recombinant form of CD147, CD147Rg, which consists of the cDNA coding for the hinge region, CH2-and CH3 domain of human IgG1 (CD147Rg is secreted by transfectants as a dimer).
Conjugation	Un-conjugated
Alternate Names	OK; Tumor cell-derived collagenase stimulatory factor; Leukocyte activation antigen M6; TCSF; Extracellular matrix metalloproteinase inducer; OK blood group antigen; CD147; Basigin; M6; EMMPRIN; Collagenase stimulatory factor; CD antigen CD147; 5F7

### Application Instructions

Application table	Application	Dilution
	FACS	10 µg/ml
	IHC-P	10 µg/ml
	IP	Assay-dependent
	WB	1 µg/ml
Application Note	WB: Under non-reducing condition. * The dilutions indicate recommended starting dilutions and the optimal dilutions or concentrations should be determined by the scientist.	
Positive Control	IHC-P: Testis	

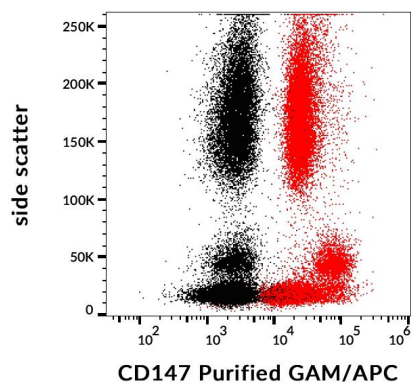
### Properties

Form	Liquid
------	--------

Purification	Purified from ascites by protein-A affinity chromatography.
Purity	> 95% (by SDS-PAGE)
Buffer	PBS (pH 7.4) and 15 mM Sodium azide
Preservative	15 mM Sodium azide
Concentration	1 mg/ml
Storage instruction	For continuous use, store undiluted antibody at 2-8°C for up to a week. For long-term storage, aliquot and store at -20°C or below. Storage in frost free freezers is not recommended. Avoid repeated freeze/thaw cycles. Suggest spin the vial prior to opening. The antibody solution should be gently mixed before use.
Note	For laboratory research only, not for drug, diagnostic or other use.

## Bioinformation

Database links	<a href="#">GeneID: 682 Human</a> <a href="#">Swiss-port # P35613 Human</a>
Gene Symbol	BSG
Gene Full Name	basigin (Ok blood group)
Background	CD147 (basigin, neurothelin, OX-47, 5A11, CE9, M6) also known as EMMPRIN (extracellular matrix metalloproteinase inducer) or TCSF (tumour cell-derived collagenase-stimulatory factor) is an ubiquitously expressed cell surface protein with multiple glycosylated forms. The highest level of CD147 expression is on metabolically active cells, such as lymphoblasts, inflammatory cells, brown adipocytes and malignant tumour cells. CD147 has multiple functions, including facilitating of cell surface expression of monocarboxylate transporter proteins and extracellular matrix metalloproteinases, regulation of integrin functions, it plays roles in cell development and activation, fetal development or retinal function.
Function	Plays an important role in targeting the monocarboxylate transporters SLC16A1, SLC16A3 and SLC16A8 to the plasma membrane. Plays pivotal roles in spermatogenesis, embryo implantation, neural network formation and tumor progression. Stimulates adjacent fibroblasts to produce matrix metalloproteinases (MMPS). Seems to be a receptor for oligomannosidic glycans. In vitro, promotes outgrowth of astrocytic processes. [UniProt]
Research Area	Cancer antibody; Immune System antibody; Metabolism antibody; Neuroscience antibody
Calculated Mw	42 kDa
PTM	N-glycosylated.



ARG62731 anti-CD147 antibody [MEM-M6/1] FACS image

Flow Cytometry: Unstained (black) and stained (red) Human peripheral blood. Cells were stained with ARG62731 anti-CD147 antibody [MEM-M6/1], followed by APC-conjugated Goat anti-Mouse antibody.