

ARG62679 anti-beta 2 Microglobulin antibody [B2M-02] (Biotin)

Package: 100 µg
Store at: 4°C

Summary

Product Description	Biotin-conjugated Mouse Monoclonal antibody [B2M-02] recognizes beta 2 Microglobulin
Tested Reactivity	Hu, Pig
Tested Application	FACS
Specificity	The clone B2M-02 reacts with beta2-microglobulin (beta2M) associated with cell-surface MHC Class I molecules and other membrane antigens as well as with soluble beta2-microglobulin. Beta2M is a 12 kDa Ig like glycoprotein expressed on lymphocytes, thymocytes, monocytes, granulocytes, platelets, endothelial cells and epithelial cells. It is absent on erythrocytes._x000D_
Host	Mouse
Clonality	Monoclonal
Clone	B2M-02
Isotype	IgG1
Target Name	beta 2 Microglobulin
Species	Human
Immunogen	Purified isolated human beta2-microglobulin.
Conjugation	Biotin
Alternate Names	Beta-2-microglobulin

Application Instructions

Application table	Application	Dilution
	FACS	1 - 2 µg/ml
Application Note	* The dilutions indicate recommended starting dilutions and the optimal dilutions or concentrations should be determined by the scientist.	

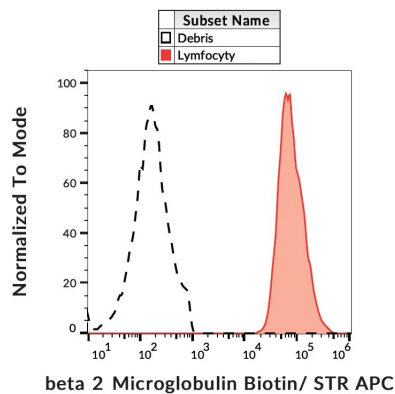
Properties

Form	Liquid
Purification Note	The purified antibody is conjugated with Biotin-LC-NHS under optimum conditions. The reagent is free of unconjugated biotin.
Buffer	PBS (pH 7.4) and 15 mM Sodium azide
Preservative	15 mM Sodium azide
Concentration	1 mg/ml
Storage instruction	Aliquot and store in the dark at 2-8°C. Keep protected from prolonged exposure to light. Avoid repeated freeze/thaw cycles. Suggest spin the vial prior to opening. The antibody solution should be gently mixed before use.

Bioinformation

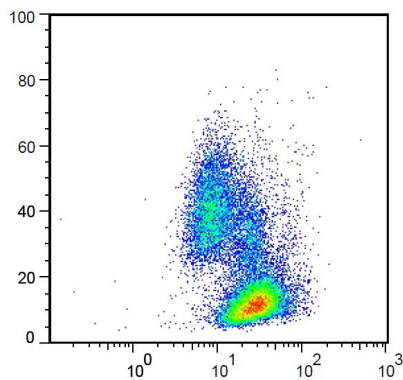
Database links	GeneID: 397033 Pig GeneID: 567 Human Swiss-port # P61769 Human Swiss-port # Q07717 Pig
Gene Symbol	B2M
Gene Full Name	beta-2-microglobulin
Background	Beta2-microglobulin non-covalently associates with the 44 kDa alpha chain to forms the HLA Class I antigen complex. Human beta2-microglobulin associated with HLA Class I antigens is expressed on many types of cells including lymphocytes, thymocytes, monocytes, granulocytes, platelets, endothelial cells, and epithelial cells. It is absent on erythrocytes.
Function	Component of the class I major histocompatibility complex (MHC). Involved in the presentation of peptide antigens to the immune system. [UniProt]
Research Area	Cancer antibody; Cell Biology and Cellular Response antibody
Calculated Mw	14 kDa
PTM	Glycation of Ile-21 is observed in long-term hemodialysis patients.

Images



ARG62679 anti-beta 2 Microglobulin antibody [B2M-02] (Biotin)
FACS image

Flow Cytometry: Human peripheral blood cells stained with ARG62679 anti-beta 2 Microglobulin antibody [B2M-02] (Biotin), followed by Streptavidin (APC).



ARG62679 anti-beta 2 Microglobulin antibody [B2M-02] (Biotin)
FACS image

Flow Cytometry: Human peripheral blood cells stained with ARG62679 anti-beta 2 Microglobulin antibody [B2M-02] (Biotin).