

## ARG62653 anti-Tropomyosin (sarcomeric) antibody [CH1]

Package: 100 µl  
Store at: -20°C

### Summary

Product Description	Mouse Monoclonal antibody [CH1] recognizes Tropomyosin
Tested Reactivity	Hu, Rat
Tested Application	FACS, ICC/IF, IHC-Fr, IHC-P, IP, WB
Specificity	specific for human striated muscle forms of tropomyosin, including cardiac alpha tropomyosin and skeletal muscle forms of tropomyosin. Reacts with human striated muscle forms of tropomyosin. Not cross-react with smooth muscle or non-muscle isoforms of tropomyosin.
Host	Mouse
Clonality	Monoclonal
Clone	CH1
Isotype	IgG1
Target Name	Tropomyosin
Species	Chicken
Immunogen	Purified chicken muscle tropomyosin.
Conjugation	Un-conjugated
Alternate Names	C15orf13; Tropomyosin alpha-1 chain; TMSA; CMD1Y; HEL-S-265; HTM-alpha; CMH3; Tropomyosin-1; LVNC9; Alpha-tropomyosin

### Application Instructions

Application table	Application	Dilution
	FACS	1 µg/10 <sup>6</sup> cells
	ICC/IF	1:10 - 1:500
	IHC-Fr	2 - 4 µg/ml
	IHC-P	2 - 4 µg/ml
	IP	Assay-dependent
	WB	1:50 - 1:100
Application Note	* The dilutions indicate recommended starting dilutions and the optimal dilutions or concentrations should be determined by the scientist.	
Positive Control	Human tongue, heart and chicken heart	

### Properties

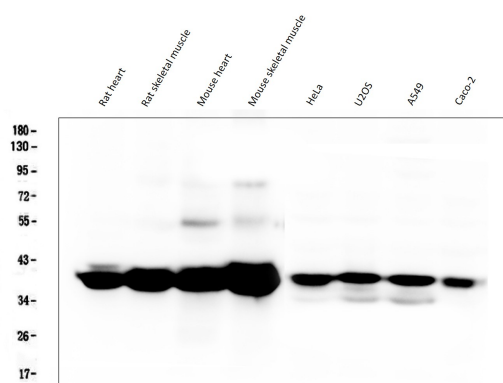
Form	Liquid
Purification	Protein G purified

Buffer	10mM PBS (pH 7.4), 0.2% BSA and 0.09% Sodium azide
Preservative	0.09% Sodium azide
Stabilizer	0.2% BSA
Concentration	0.2 mg/ml
Storage instruction	For continuous use, store undiluted antibody at 2-8°C for up to a week. For long-term storage, aliquot and store at -20°C or below. Storage in frost free freezers is not recommended. Avoid repeated freeze/thaw cycles. Suggest spin the vial prior to opening. The antibody solution should be gently mixed before use.
Note	For laboratory research only, not for drug, diagnostic or other use.

## Bioinformation

Database links	<a href="#">GeneID: 24851 Rat</a> <a href="#">GeneID: 7168 Human</a> <a href="#">Swiss-port # P04692 Rat</a> <a href="#">Swiss-port # P09493 Human</a>
Gene Symbol	TPM1
Gene Full Name	tropomyosin 1 (alpha)
Background	Tropomyosin is a dimeric coiled coil protein that binds along the length of actin filaments. Non-muscle forms of tropomyosin have been identified in a wide range of cell types.
Function	Binds to actin filaments in muscle and non-muscle cells. Plays a central role, in association with the troponin complex, in the calcium dependent regulation of vertebrate striated muscle contraction. Smooth muscle contraction is regulated by interaction with caldesmon. In non-muscle cells is implicated in stabilizing cytoskeleton actin filaments. [UniProt]
Research Area	Cell Biology and Cellular Response antibody; Signaling Transduction antibody
Calculated Mw	33 kDa
PTM	Phosphorylated at Ser-283 by DAPK1 in response to oxidative stress and this phosphorylation enhances stress fiber formation in endothelial cells.

## Images



ARG62653 anti-Tropomyosin (sarcomeric) antibody [CH1] WB image

Western blot: 50 µg of Rat heart, Rat skeletal muscle, Mouse heart, Mouse skeletal muscle, HeLa, U2OS, A549 and Caco-2 cell lysates stained with ARG62653 anti-Tropomyosin (sarcomeric) antibody [CH1] at 0.5 µg/ml, overnight at 4°C.